



# Corporate Profile

Mar, 2020



# Supernano At-a-Glance



**FOUNDED AND  
HEADQUARTERED IN  
SILICON VALLEY**



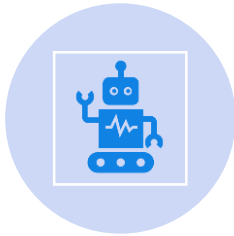
**\$3.5 BILLION IN REVENUE  
IN FY19**



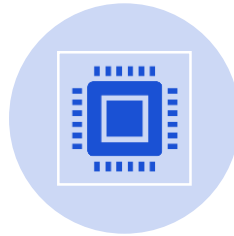
**GLOBAL OPERATIONS IN  
100+ COUNTRIES**



**RANKED AMONG THE  
FORTUNE 1000  
COMPANIES**



**2M SQUARE FEET GLOBAL  
MANUFACTURING, OVER  
50% IN US**



**ENGINEERING EXPERTISE  
WITH THE INDUSTRY'S  
BROADEST PRODUCT  
PORTFOLIO**



**1.2M SERVER AND  
STORAGE NODES SHIPPED  
IN FY19, #5 SERVER  
VENDOR PER IDC**



**FIRST-TO-MARKET  
LEADER IN ENTERPRISE,  
CLOUD, AI, AND EDGE**





# A Stronger Foundation

Total 4,000 Employees Worldwide, Over 1,700 Employees in R&D

# 2020

## Global Expansions



New US HQ (planned)



B23



B61 Taiwan

Ranked #54  
in NASDAQ  
by revenue.

54



Resource Saving  
MicroBlade  
One of the World's  
Most Efficient  
Data Centers  
(1.06 PUE)



World's Fastest  
Growing IT  
Infrastructure  
Company-Fortune



Supermicro®  
Netherlands  
Headquarter



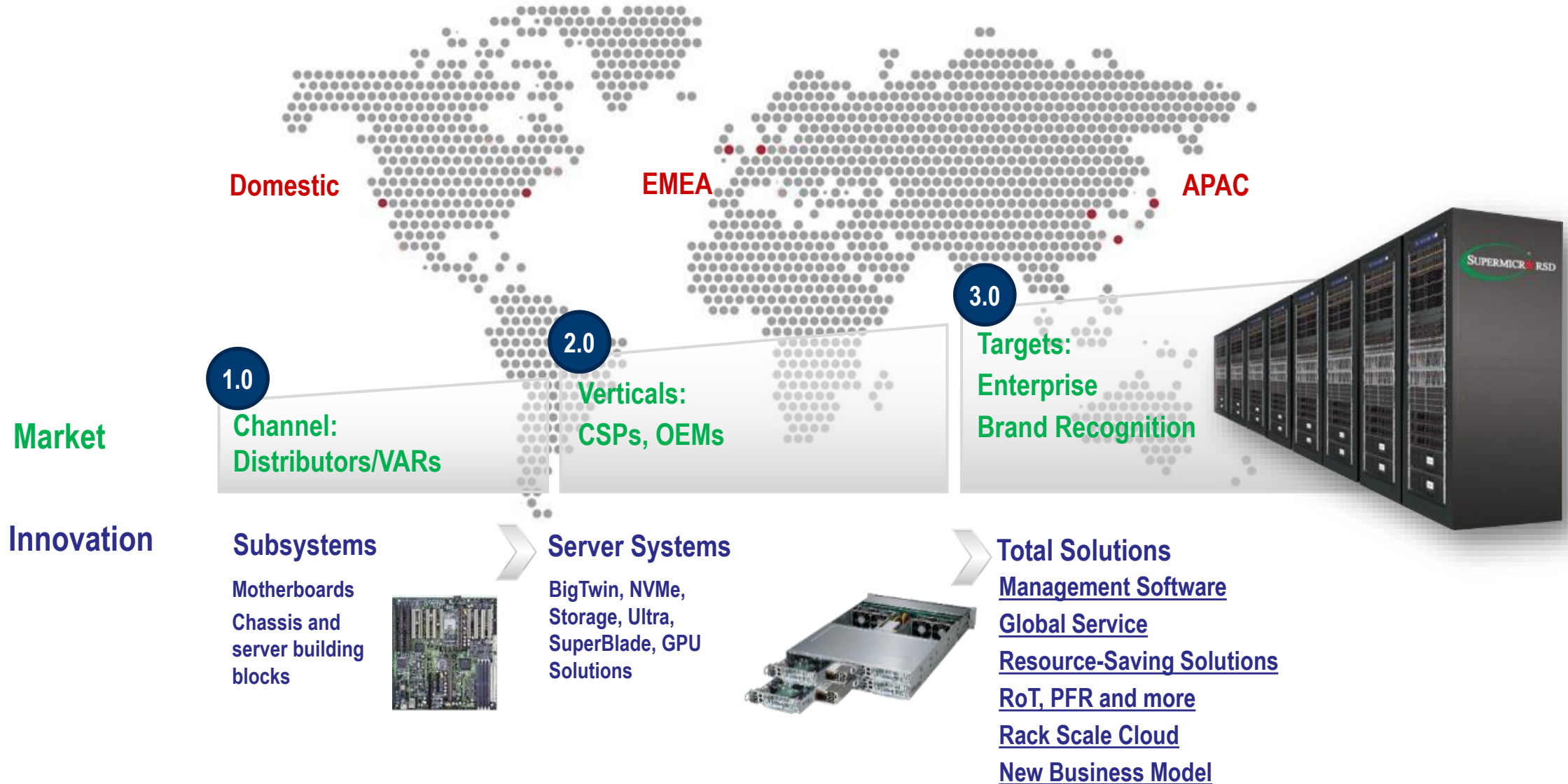
# 2010

Supermicro®  
Taiwan Science  
and Technology  
Park





# Our Business Progression



# Industry's Strongest Server/Storage Product Line

Cloud & Edge Infrastructure Building Blocks



Form Factor Optimized ↑

Blade



Rack-mount



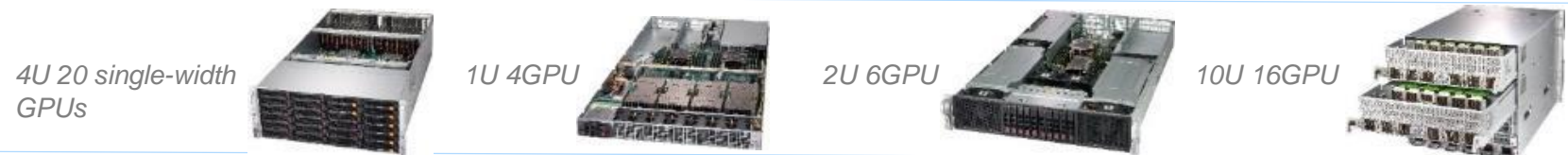
SuperStorage



Multi-node



GPU SuperServers



Edge Computing



Enterprise

Cloud / Web

Storage / HCI

AI / ML / HPC

Workload Optimized →

# AMD Server ROME Solutions Roadmap



2019				2020	
Q1	Q2	Q3	Q4	Q1	Q2

## 2U BigTwin (16 DIMMs per node)

Sockets:	Dual Processors
Memory Channel:	1DIMM per Channel
Form Factor:	2U Multi-nodes
Storage options:	2.5" SATA/Hybrid/NVMe

## 1U WIO (8 DIMMs)

Sockets:	Single Processor
Memory Channel:	1DIMM per Channel
Form Factor:	1U
Storage options:	2.5" / 3.5" SATA

## 2U TwinPro (8 DIMMs per node)

Sockets:	Single Processors
Memory Channel:	1DIMM per Channel
Form Factor:	2U Multi-nodes
Storage options:	3.5" SATA

## 4U 8-GPU (32 DIMMs)

Sockets:	Dual Processors
Memory Channel:	2DIMM per Channel
Form Factor:	4U
Storage options:	2.5" SATA/NVMe

## 1U/2U Ultra (32 DIMMs)

Sockets:	Dual Processors
Memory Channel:	2DIMM per Channel
Form Factor:	1U & 2U
Storage options:	2.5" SATA/NVMe



Left Edge = Kickoff  
Right Edge = Production

# Leader in New Form Factor Storage Systems

## Solid-State Device



**SSG-1029P-NES32R**  
**SSG-1029P-NEL32R**  
**SSG-136R-NEL32JBF (E1.L JBOF)**

- 1U 32x E1.S E1.L SSD
- RDMA optimized Configuration for low latency
- Available for JBOF configuration



**SSG-1029P-NMR36L**

- 1U 32x NF1 SSD (1/2 PB-Samsung PM983)
- 4x m.2 SATA SSD bays



**SYS-1029P-N32R**  
**SSG-136R-N32JBF (U.2 JBOF)**

- 1U 32x U.2 SSD
- RDMA optimized Configuration for low latency
- Available for JBOF configuration

## HDD



**SSG-6019P-ACR12L/L+**

- 1U 12x Hot-Swap 3.5" SAS3/SATA3 bays (12Gb/sec)
- 4x 7mm Hybrid Hot-Swap NVMe/SSD bays
- Up to 12x DIMM Slots (DDR4)
- 3 PCI-E 3.0 x16 slots



# Resource-Savings Architecture



Disaggregated  
Server  
Architecture



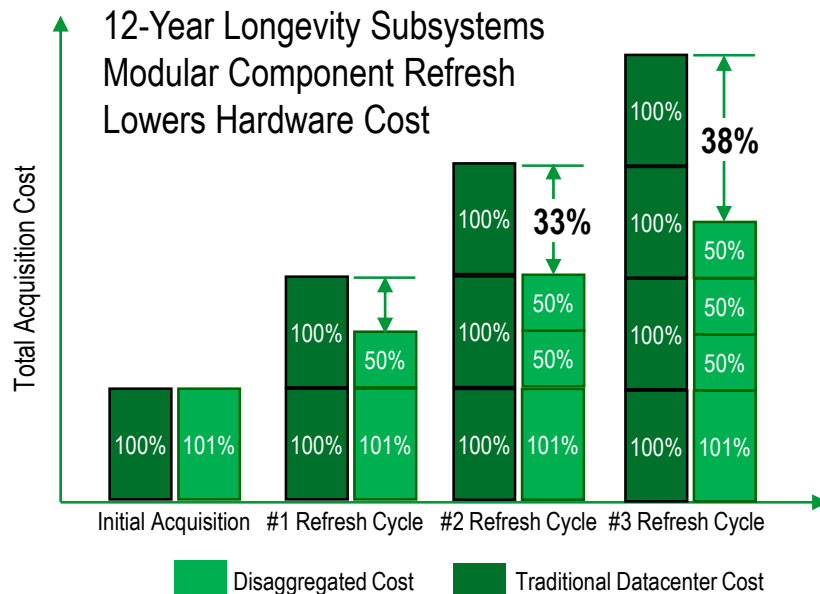
Free Air  
Cooling



Pooled  
Resources



Rack Scale  
Design



- With **200,000+** Supermicro Resource-Saving Blade servers:
  - ❖ **35% - 65%** reduced CAPEX costs per refresh cycle
  - ❖ **1.06 PUE** – one of the most energy efficient data centers in the world
  - ❖ **56%** space utilization improvement rate
  - ❖ **Future proof** disaggregated Intel Rack Scale Design (RSD) supported



- 3 SKUs of Mega DC line of servers with slots for OCP 3.0 Mezzanine NIC card

		
Frontend Server 1U10Bay	Slim Storage 1U12Bay+4NVMe	Database, GPU 2U12Bay
SSG-1129P-ACR10N4L	SSG-6119P-ACR12N4L	SSG-6129P-ACR12N4L/+G

- 1U and 2U servers are deployed with OpenBMC based on customer request
- OCP Accelerator Module
- Dual Socket AMD Epyc 4U 8GPU server with OCP 3.0 Mezzanine NIC card

## DISCLAIMER

Super Micro Computer, Inc. may make changes to specifications and product descriptions at any time, without notice. The information presented in this document is for informational purposes only and may contain technical inaccuracies, omissions and typographical errors. Any performance tests and ratings are measured using systems that reflect the approximate performance of Super Micro Computer, Inc. products as measured by those tests. Any differences in software or hardware configuration may affect actual performance, and Super Micro Computer, Inc. does not control the design or implementation of third party benchmarks or websites referenced in this document. The information contained herein is subject to change and may be rendered inaccurate for many reasons, including but not limited to any changes in product and/or roadmap, component and hardware revision changes, new model and/or product releases, software changes, firmware changes, or the like. Super Micro Computer, Inc. assumes no obligation to update or otherwise correct or revise this information.

SUPER MICRO COMPUTER, INC. MAKES NO REPRESENTATIONS OR WARRANTIES WITH RESPECT TO THE CONTENTS HEREOF AND ASSUMES NO RESPONSIBILITY FOR ANY INACCURACIES, ERRORS OR OMISSIONS THAT MAY APPEAR IN THIS INFORMATION.

SUPER MICRO COMPUTER, INC. SPECIFICALLY DISCLAIMS ANY IMPLIED WARRANTIES OF MERCHANTABILITY OR FITNESS FOR ANY PARTICULAR PURPOSE. IN NO EVENT WILL SUPER MICRO COMPUTER, INC. BE LIABLE TO ANY PERSON FOR ANY DIRECT, INDIRECT, SPECIAL OR OTHER CONSEQUENTIAL DAMAGES ARISING FROM THE USE OF ANY INFORMATION CONTAINED HEREIN, EVEN IF SUPER MICRO COMPUTER, Inc. IS EXPRESSLY ADVISED OF THE POSSIBILITY OF SUCH DAMAGES.

## ATTRIBUTION

© 2020 Super Micro Computer, Inc. All rights reserved.



# Thank You



[www.supermicro.com](http://www.supermicro.com)