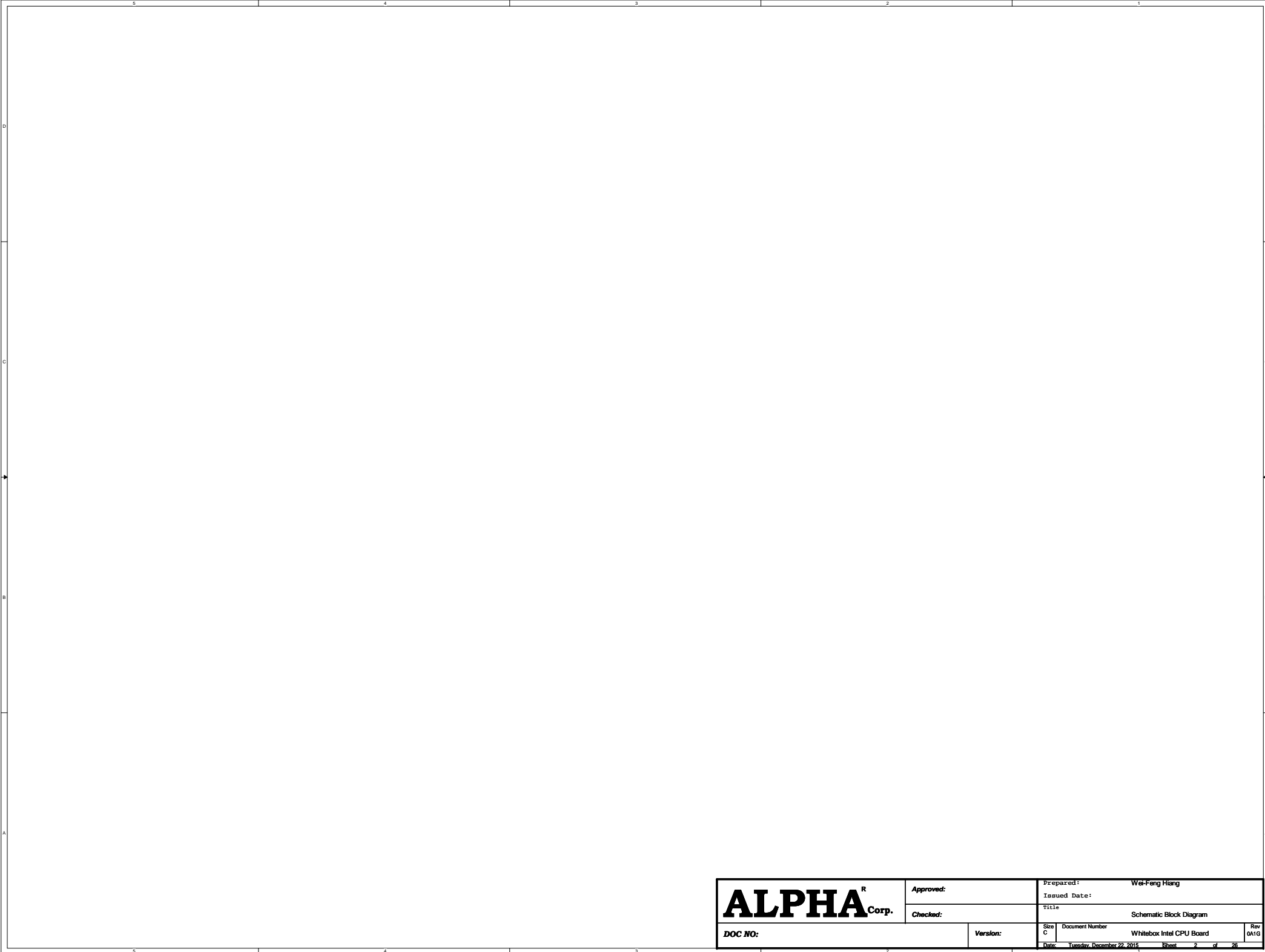


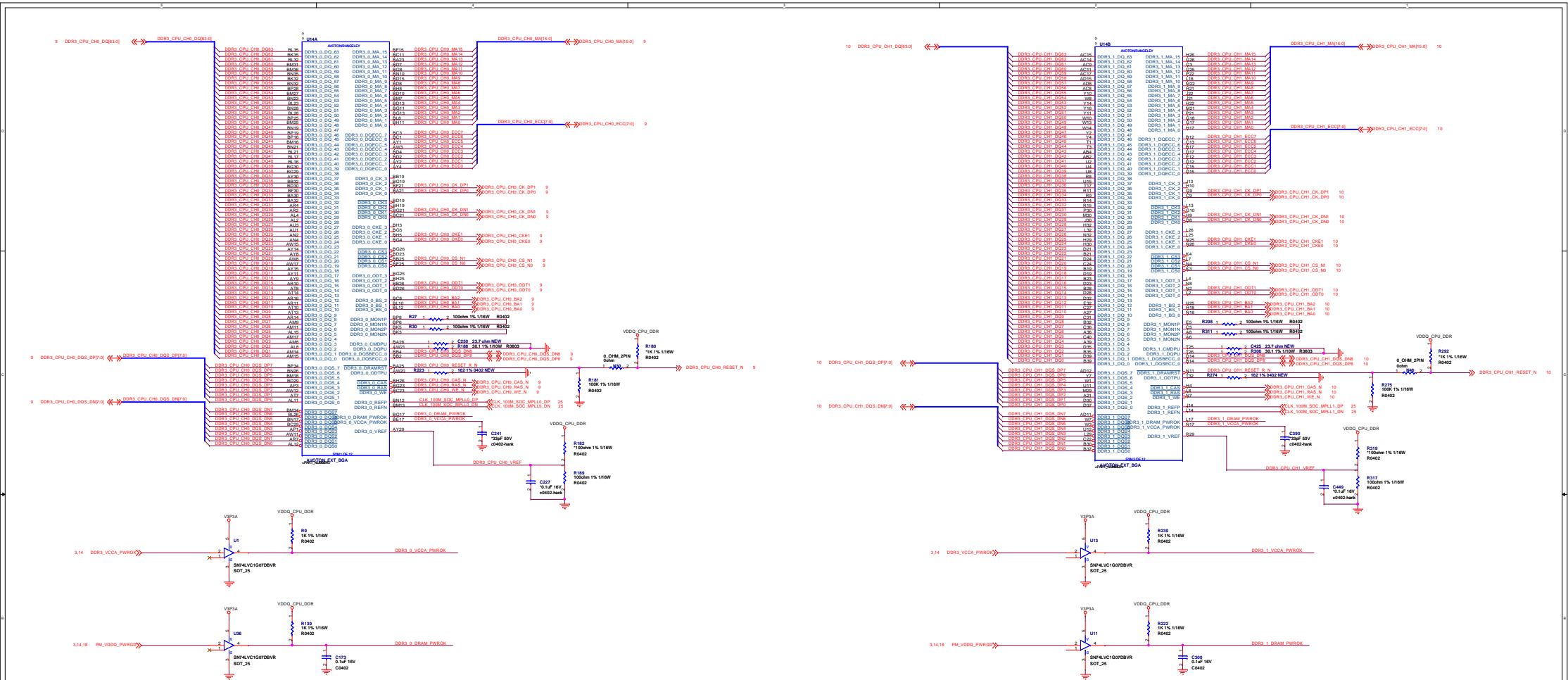
ZION CPU BOARD

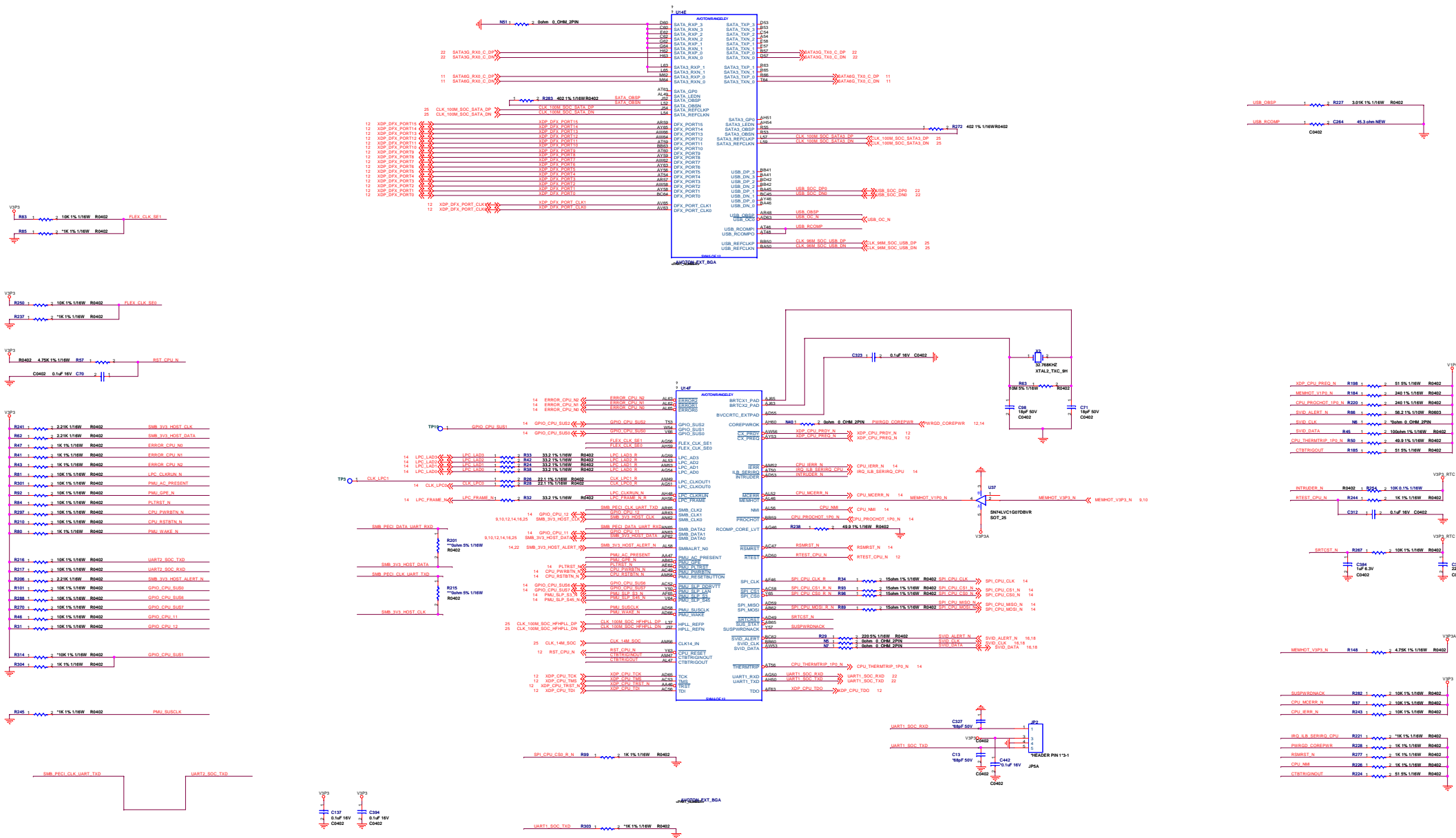
01-REVISION_HISTORY
02-BLOCK_DIAGRAM
03-CPU_CONN
04-CLOCK TREE
05-Master_FPGA
06-Master_FPGA_Power
07-ID PROM & IO EXPENDER
08-CHASSIS-D(I2C-1) TREE
09-Security Errpon
10-TB-Temp Sensors
10-TB-Temp Sensors
10-TB-Temp Sensors
10-TB-Temp Sensors
10-TB-Temp Sensors
09-Security Errpon
10-TB-Temp Sensors
10-TB-Temp Sensors
10-TB-Temp Sensors
10-TB-Temp Sensors
10-TB-Temp Sensors
09-Security Errpon
10-TB-Temp Sensors
10-TB-Temp Sensors
10-TB-Temp Sensors
10-TB-Temp Sensors
10-TB-Temp Sensors

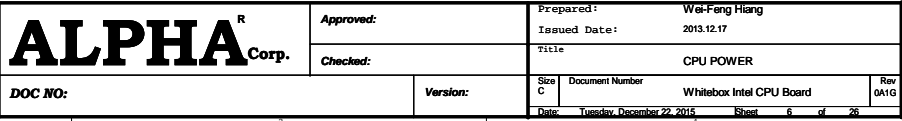
ALPHA^R Corp.	Approved:		Prepared: Wei-Feng Hiang	
	Checked:		Issued Date: 2013.12.17	
DOC NO:	Version:	Title REVISION_HISTORY		
		Size B	Document Number	Rev 0A1G
		Date: Tuesday, December 22, 2015 Sheet 1 of 26		

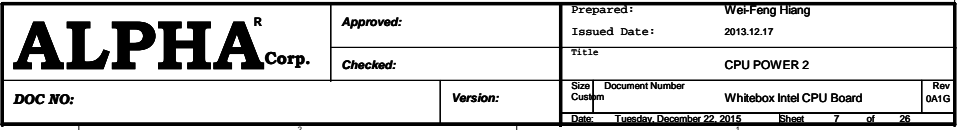


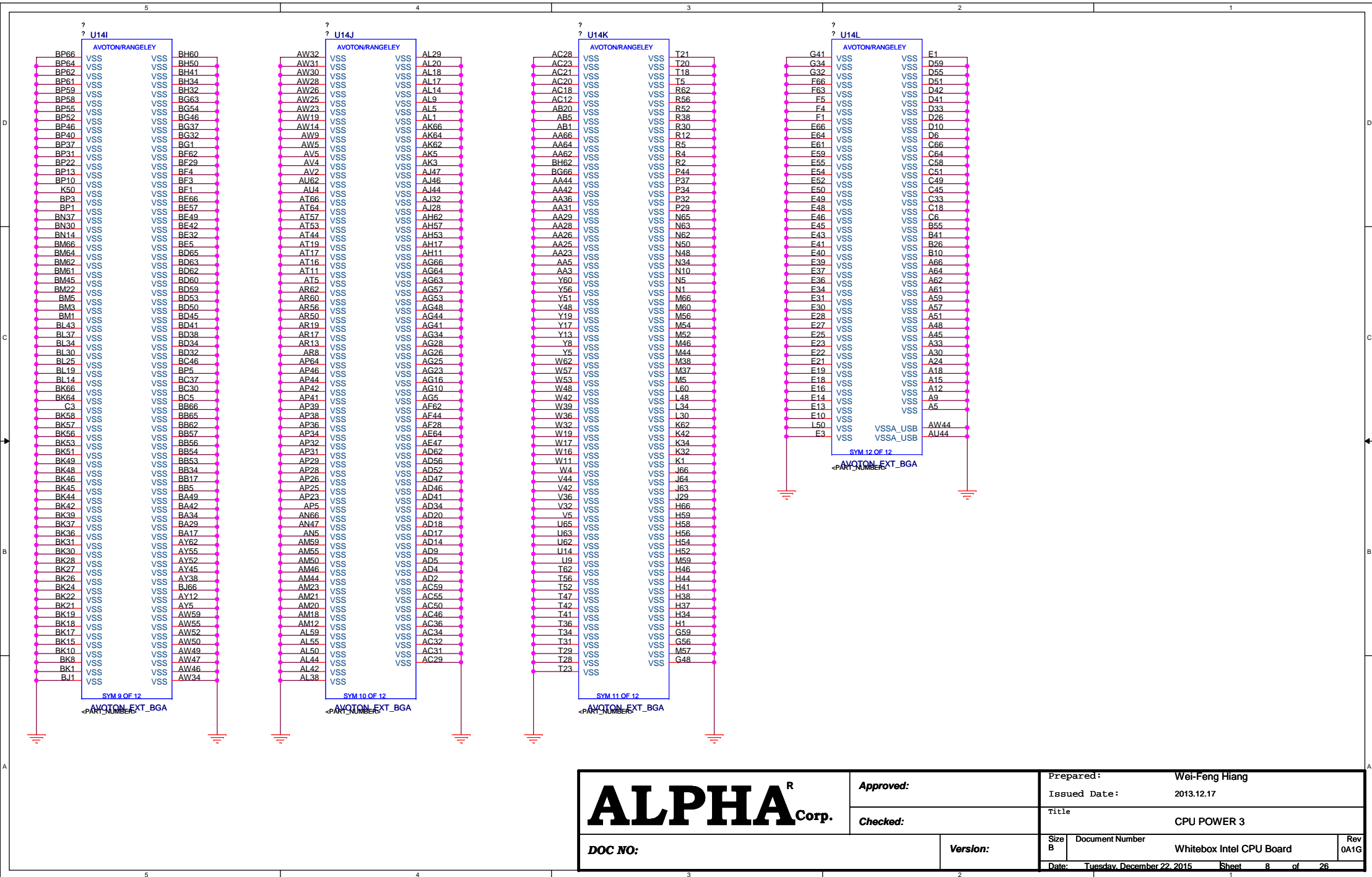
ALPHA^R Corp.	Approved:		Prepared: Wei-Feng Hsiang		
	Checked:		Issued Date:		
	DOC NO:		Title: Schematic Block Diagram		
		Version:	Size C	Document Number Whitebox Intel CPU Board	Rev 0A1G
		Date: Tuesday, December 22, 2015		Sheet 2 of 26	

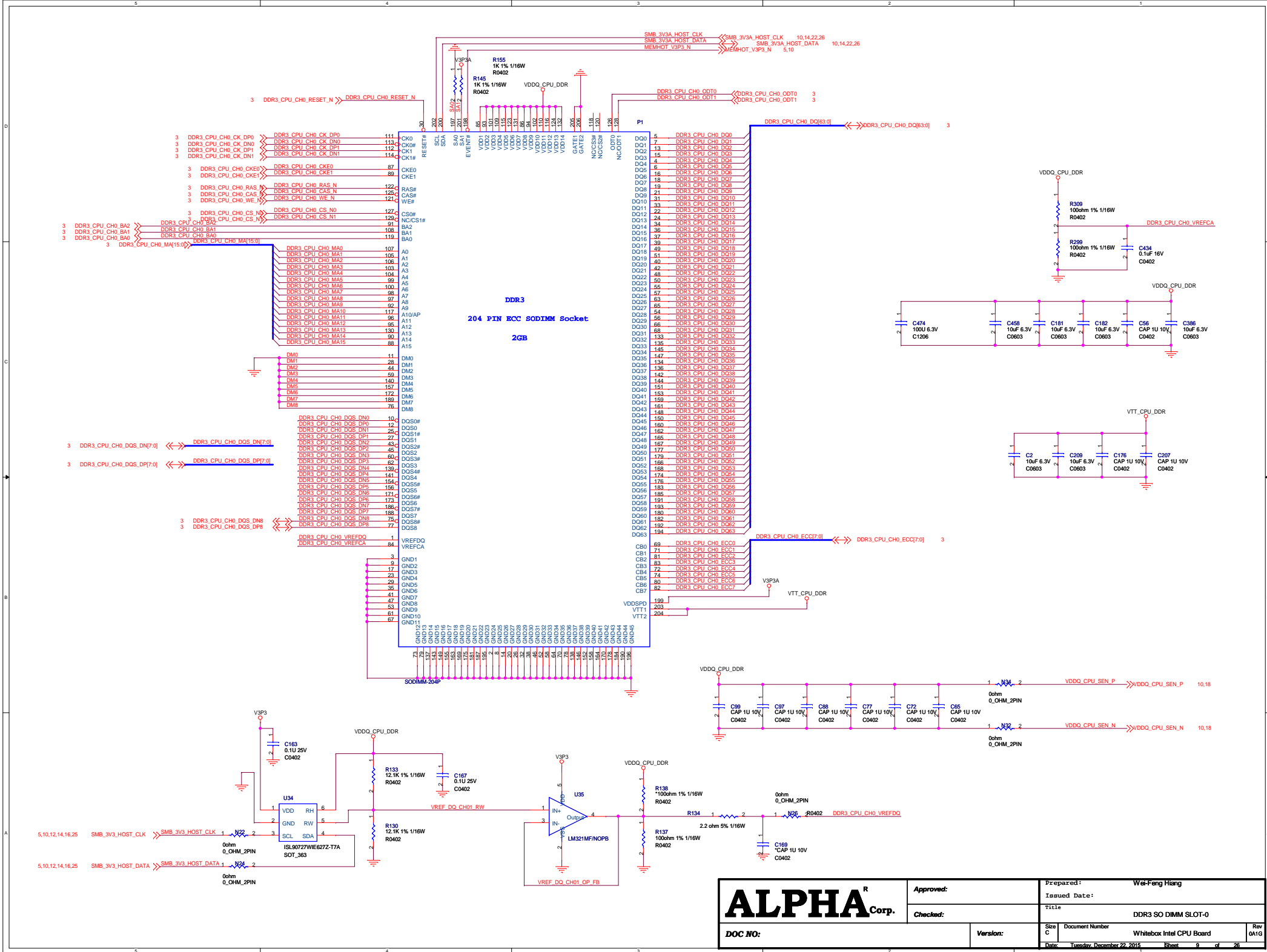


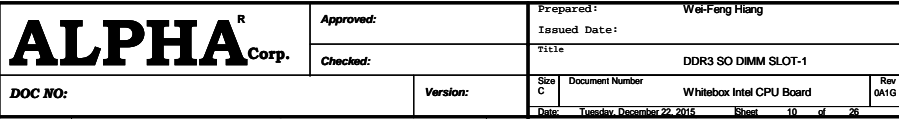


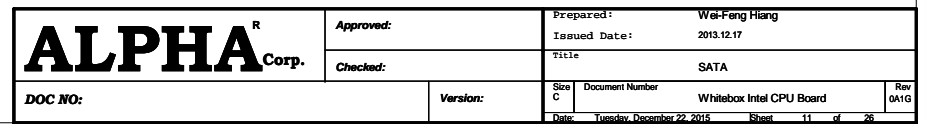


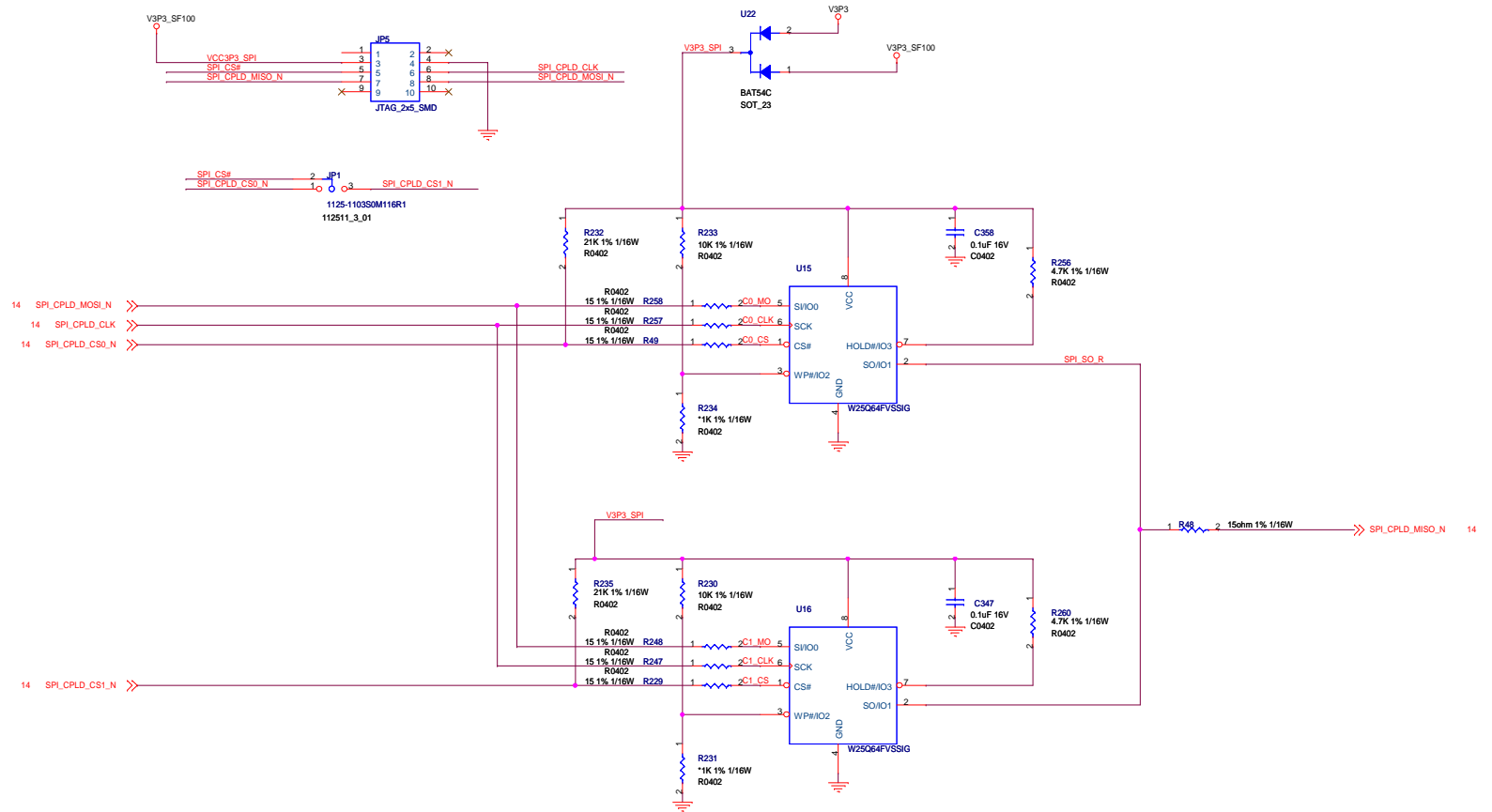


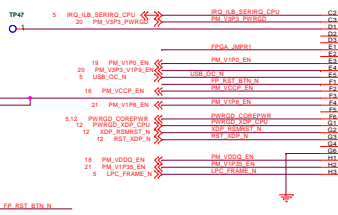






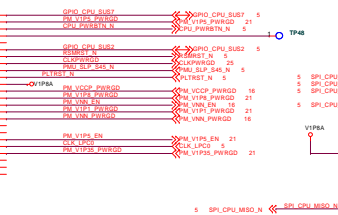






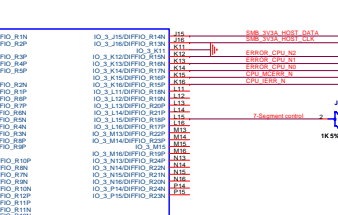
MAX9272Z256
VERSION: 1.0
PAGE: 2 of 8
DATE: FEB_28_2011

BOA256_16X16_T90



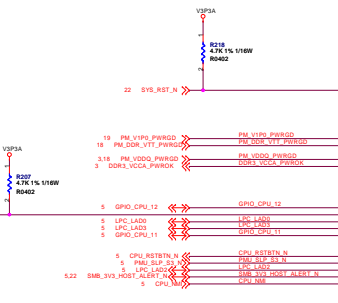
MAX9272Z256
VERSION: 1.0
PAGE: 2 of 8
DATE: FEB_28_2011

BOA256_16X16_T90



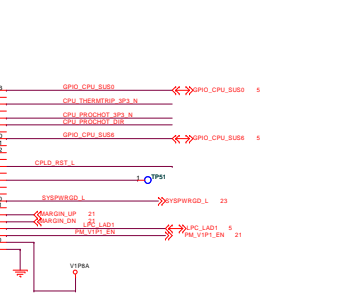
MAX9272Z256
VERSION: 1.0
PAGE: 2 of 8
DATE: FEB_28_2011

BOA256_16X16_T90



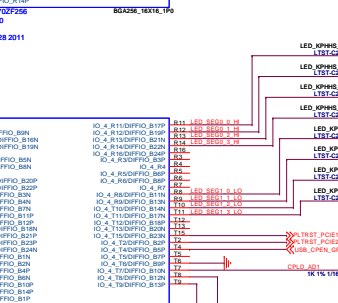
MAX9272Z256
VERSION: 1.0
PAGE: 3 of 8
DATE: FEB_28_2011

BOA256_16X16_T90



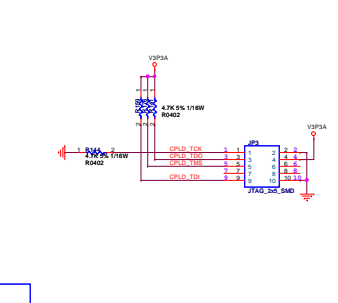
MAX9272Z256
VERSION: 1.0
PAGE: 3 of 8
DATE: FEB_28_2011

BOA256_16X16_T90



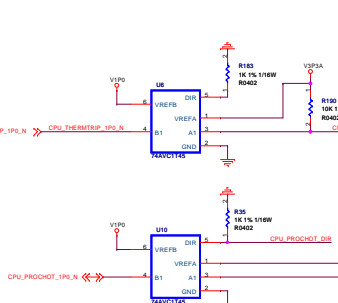
MAX9272Z256
VERSION: 1.0
PAGE: 3 of 8
DATE: FEB_28_2011

BOA256_16X16_T90



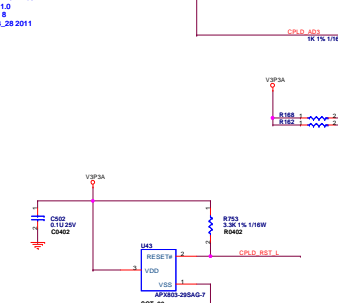
MAX9272Z256
VERSION: 1.0
PAGE: 4 of 8
DATE: FEB_28_2011

BOA256_16X16_T90



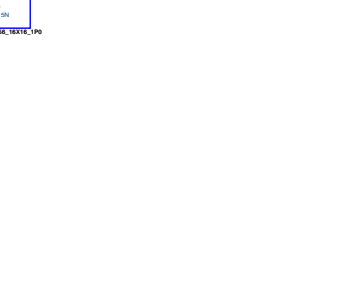
MAX9272Z256
VERSION: 1.0
PAGE: 4 of 8
DATE: FEB_28_2011

BOA256_16X16_T90



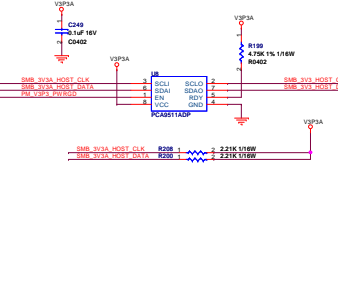
MAX9272Z256
VERSION: 1.0
PAGE: 4 of 8
DATE: FEB_28_2011

BOA256_16X16_T90



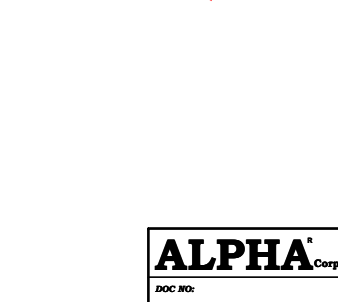
MAX9272Z256
VERSION: 1.0
PAGE: 5 of 8
DATE: FEB_28_2011

BOA256_16X16_T90



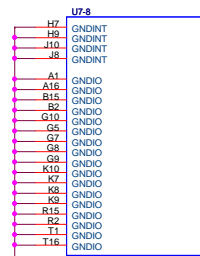
MAX9272Z256
VERSION: 1.0
PAGE: 5 of 8
DATE: FEB_28_2011

BOA256_16X16_T90

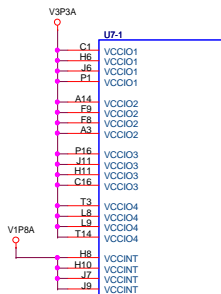


MAX9272Z256
VERSION: 1.0
PAGE: 5 of 8
DATE: FEB_28_2011

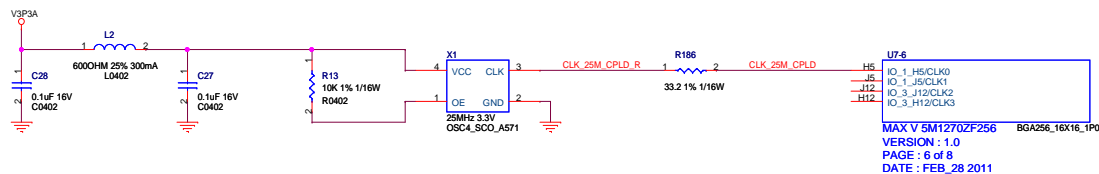
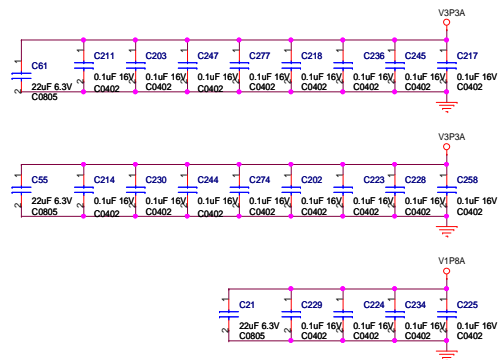
BOA256_16X16_T90



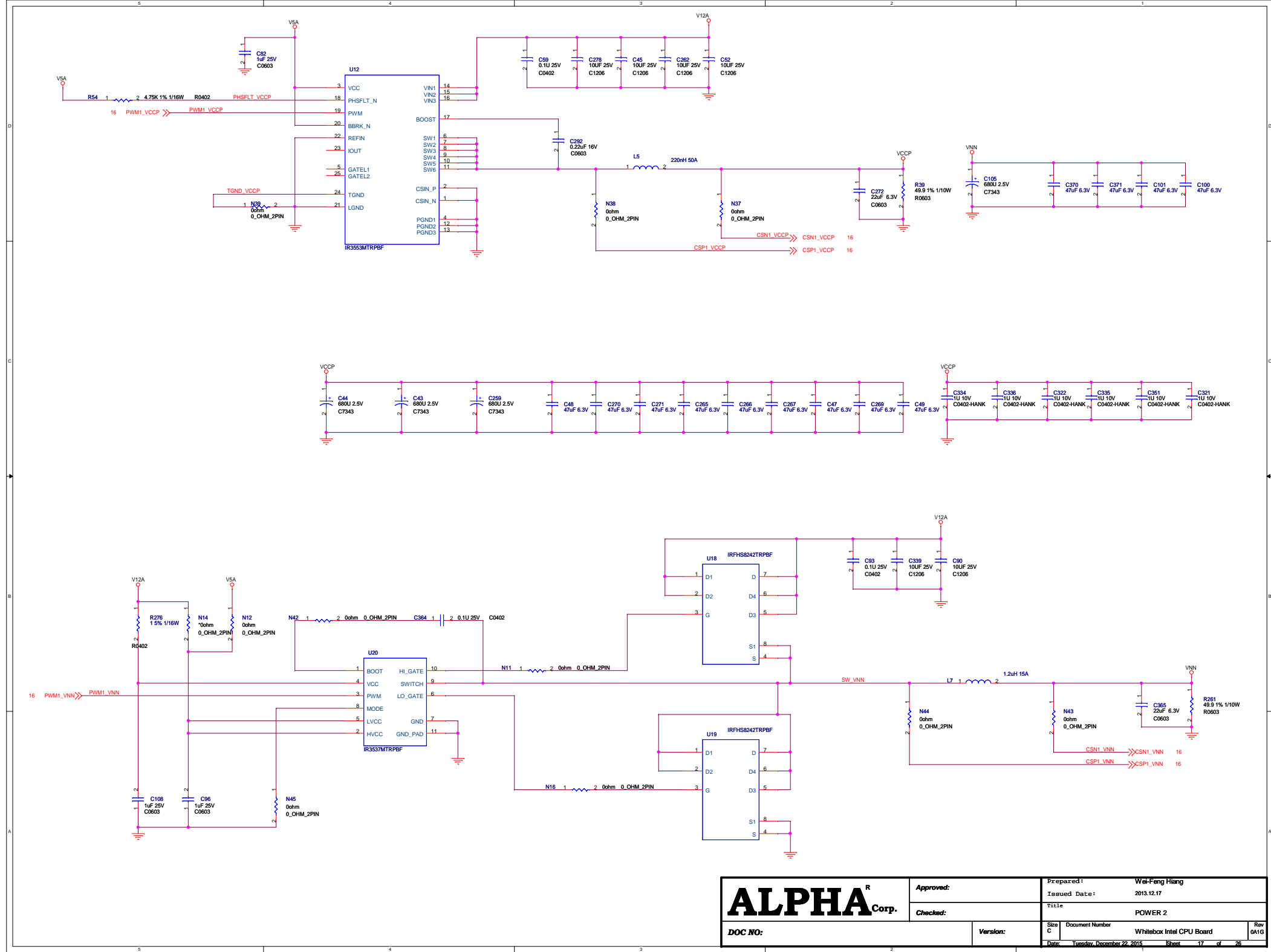
MAX V 5M1270ZF256
VERSION : 1.0
PAGE : 8 of 8
DATE : FEB_28 2011
BGA256_16X16_1P0

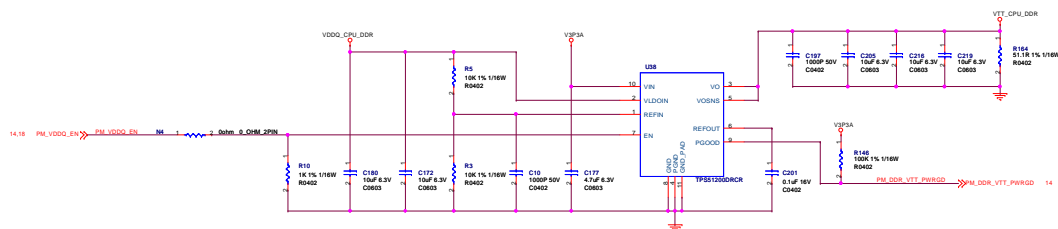
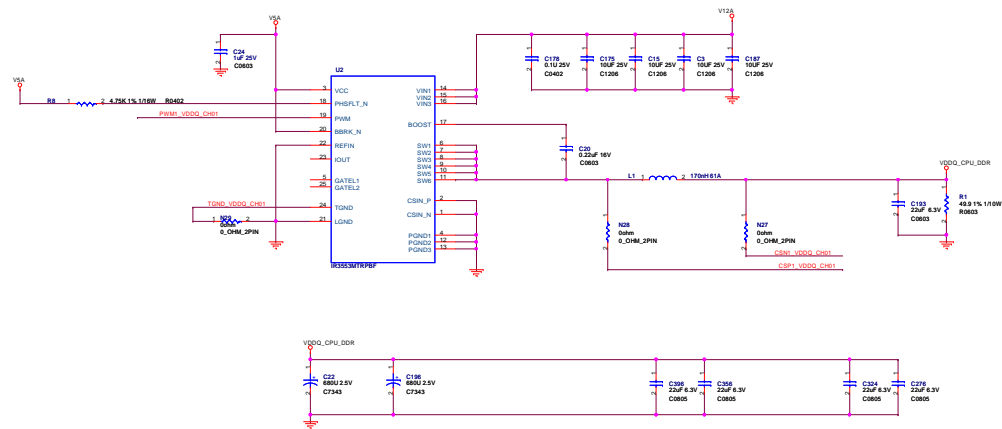


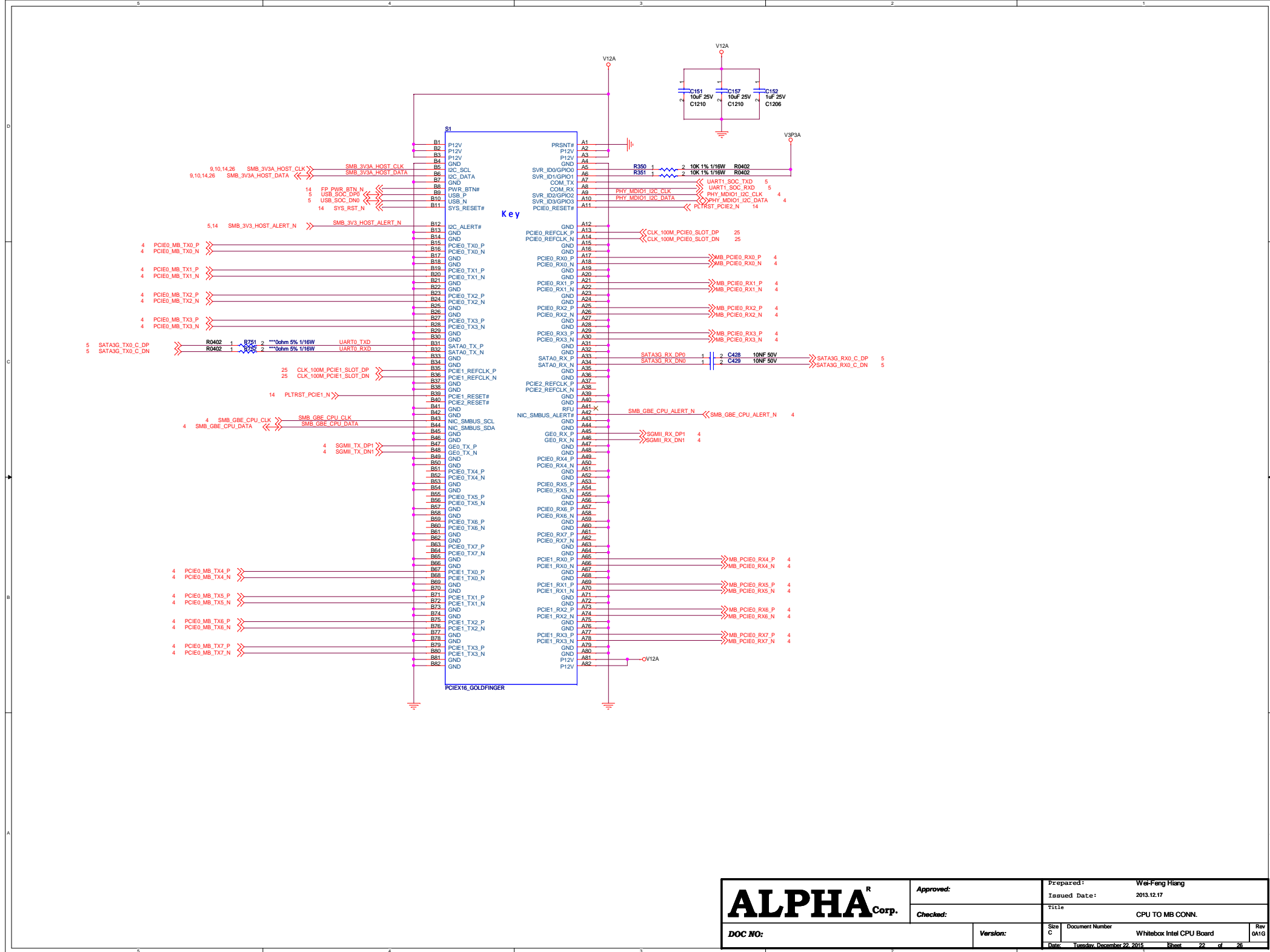
MAX V 5M1270ZF256
VERSION : 1.0
PAGE : 1 of 8
DATE : FEB_28 2011
BGA256_16X16_1P0

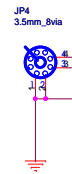
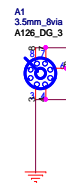


U7-8
IO_1_H5/CLK0
IO_1_J6/CLK1
IO_3_J12/CLK2
IO_3_H12/CLK3
MAX V 5M1270ZF256
VERSION : 1.0
PAGE : 6 of 8
DATE : FEB_28 2011
BGA256_16X16_1P0

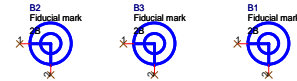
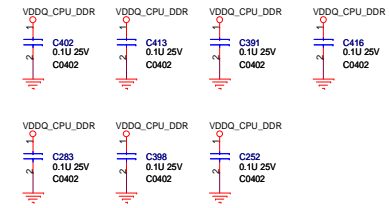
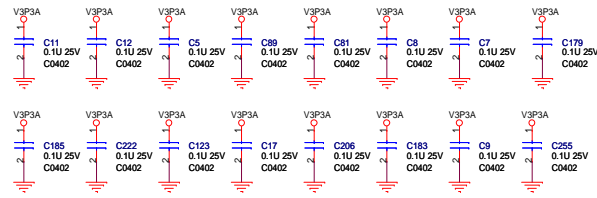
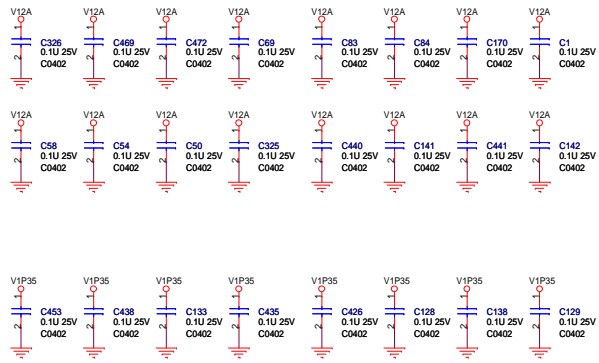




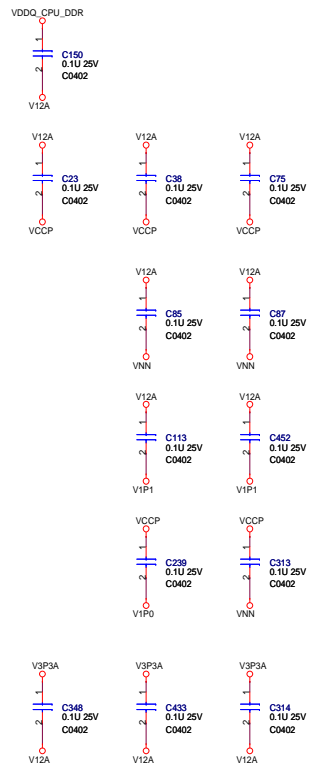




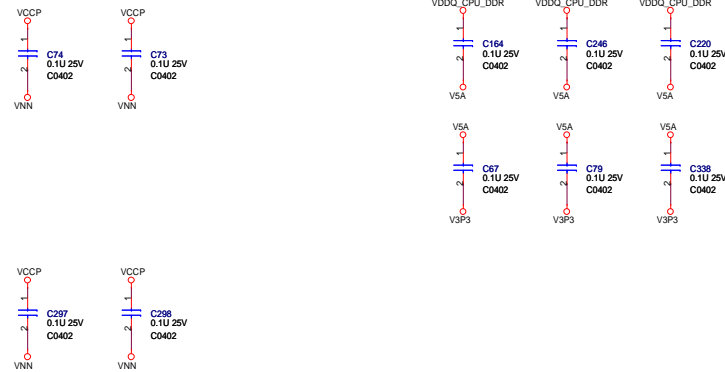
ALPHA ^R Corp.	Approved:		Prepared: Wei-Feng Hsiang	
	Checked:		Issued Date: 2013.12.17	
	DOC NO:		Title: POWER 3	
Version:		Size C	Document Number	Rev 0A1G
		Date: Tuesday, December 22, 2015 Sheet 23 of 26		



L6 stitching cap



L7 stitching cap



ALPHA^R Corp. DOC NO:		Approved:	Prepared: Wei-Feng Hsiang		
		Checked:	Issued Date: 2013.12.17		
		Version:	Title: CPU TO MB CONN.		
			Size C	Document Number	Rev
				Whitebox Intel CPU Board	0A1G
			Date: Tuesday, December 22, 2015	Sheet 24	of 26

