



OPEN
Compute Engineering Workshop

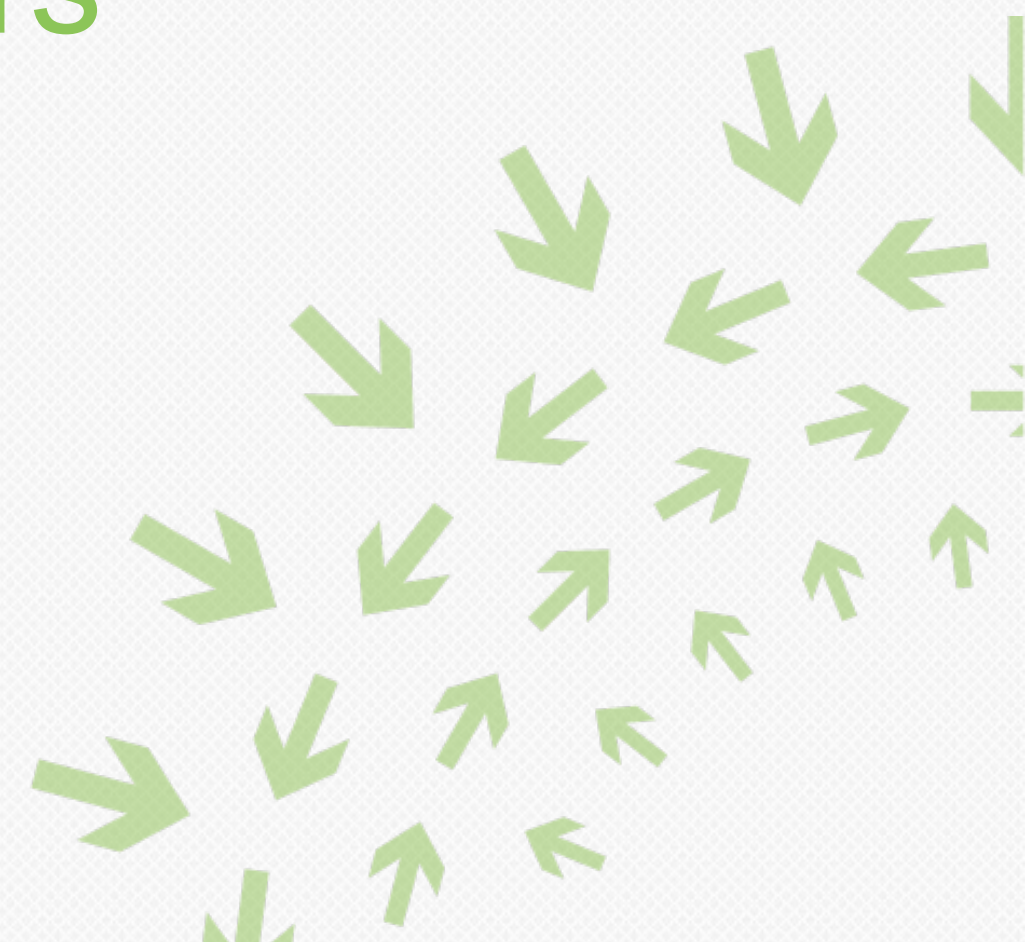
OpenMonitor

Wear Leveling Across Data Centers

Mark Carlson

Toshiba

Principal Engineer, Industry Standards





OPEN
Compute Engineering Workshop

OpenMonitor

Data Center administrators would like to be able to get insights into the wear on their deployed storage devices

HDD, SSD, Persistent Memory



What is OpenMonitor

An open source framework to expose wear information from storage devices

Allows storage vendors to develop plugins to expose their proprietary information in a common format

Can be binary, closed source

Iterate on the format as more is learned about data center load balancing

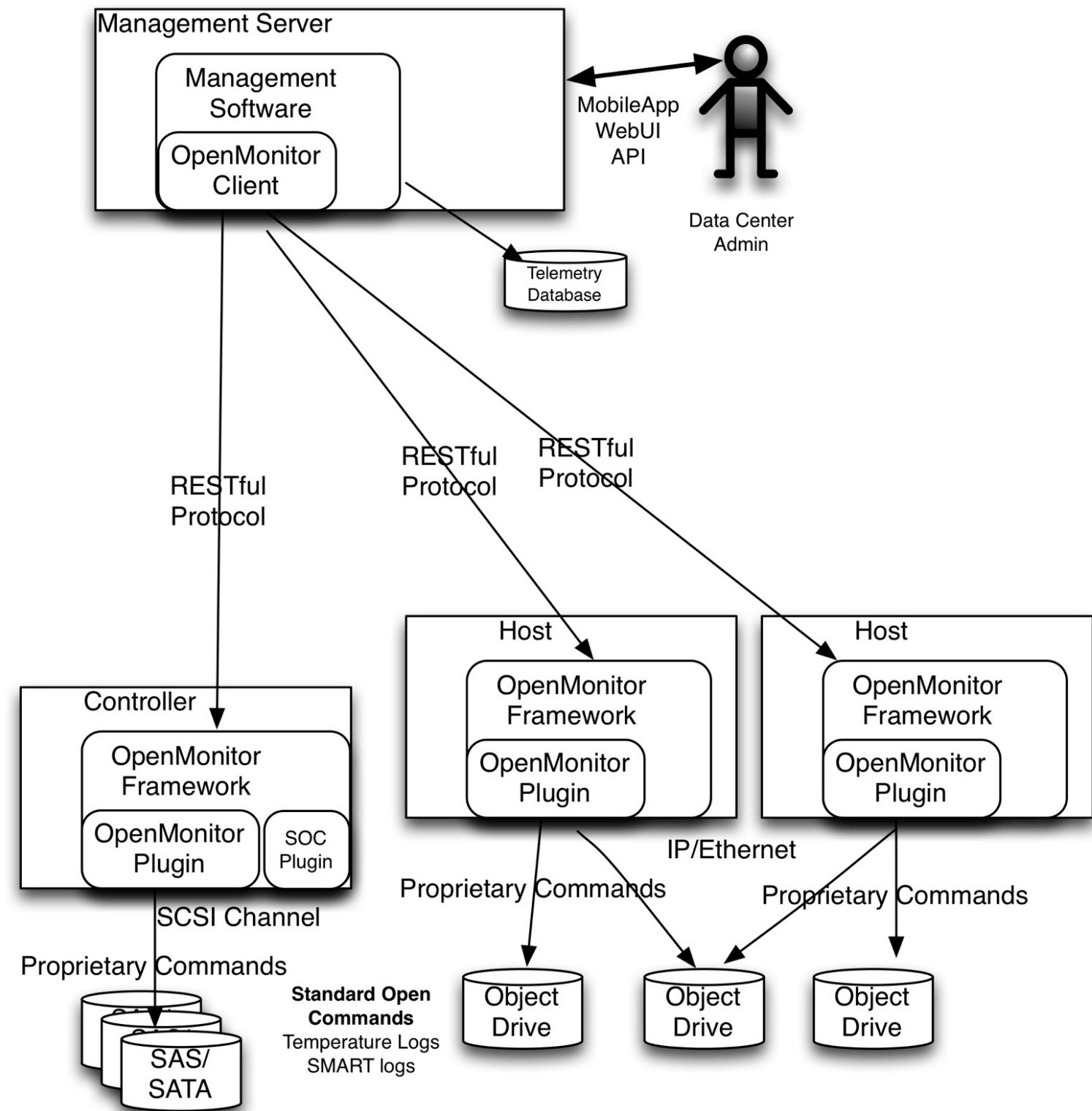


What is OpenMonitor

Draft diagram showing all the moving parts that need to be developed.

Possible integration with new Cloud Server multi-node Management Client

Looking for interested developers on both sides



Who is OpenMonitor

Outgrowth of discussion at last summit

Storage vendors have insights into device wear – how to expose in a useful manner?

Significant interest from the Storage group, so made a decision to get interested folks together to work off (monthly) cycle and bring back to the larger group



Who is OpenMonitor

Group meets monthly (more often if needed) to discuss the requirements and architecture

Call for code to expose information that is needed for datacenter wear leveling

New “storage intelligence” making it’s way into T10 and T13 standards – leverage this in a common way across vendors

Supplement with additional data obtained through vendor logs



Meetings

All offline discussions done via email on:

opencompute-storage@lists.opencompute.org

Documents are posted on the Wiki:

http://www.opencompute.org/wiki/Wear_Monitor



Thank You!

Questions?

