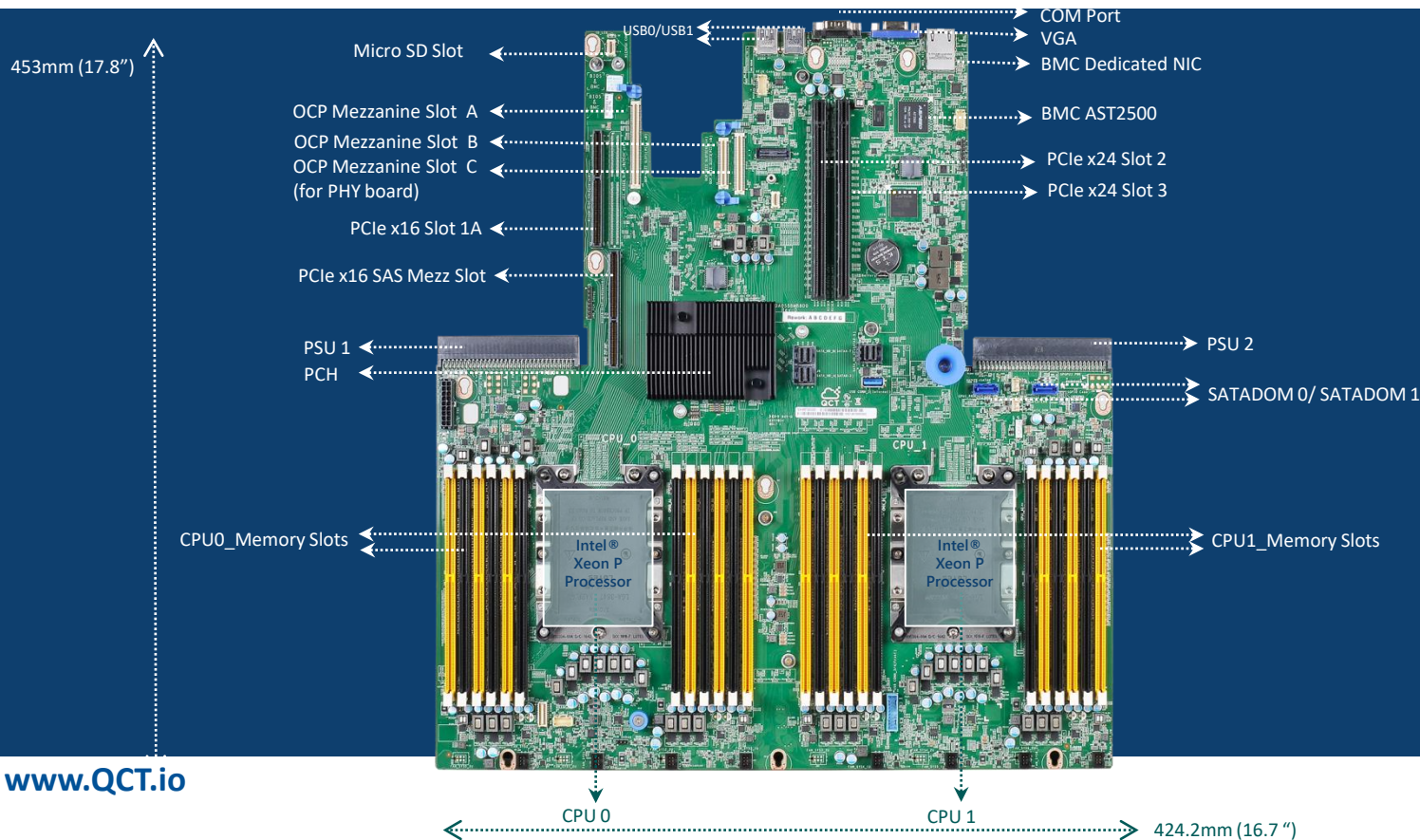




QCT Decathlete v3 Specification

Decathlete v3.0

Mother Board overview



Block Diagram

S5B Block Diagram

Rev0.8 2017/1/20

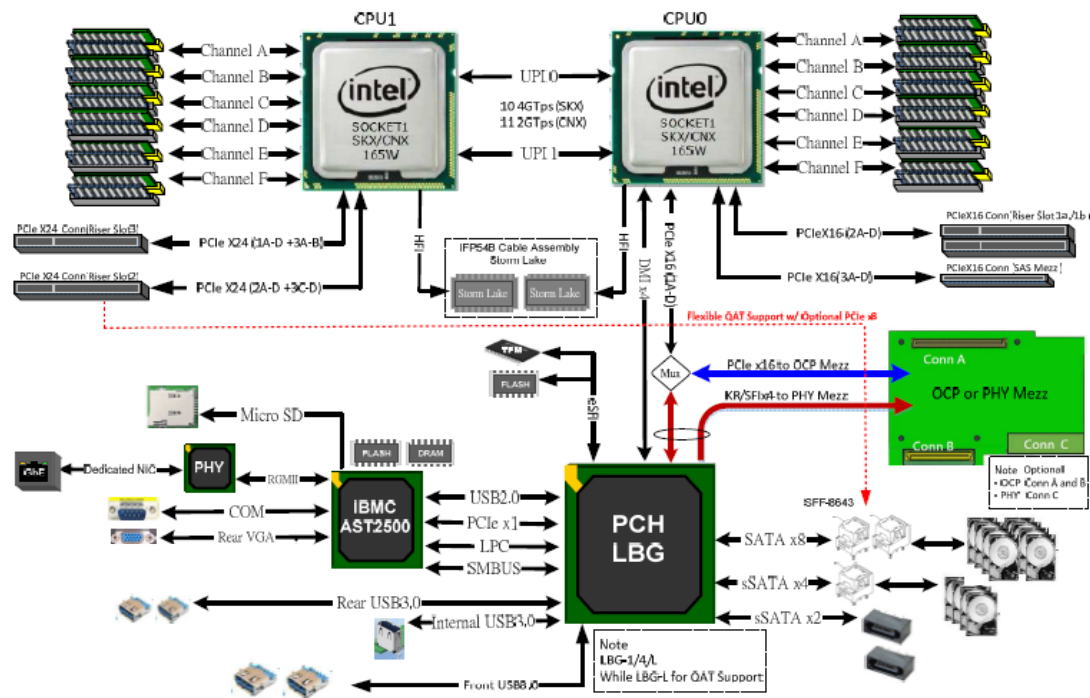


Figure 2-1 Purley Enterprise Rack S5B Configuration

QCT Decathlete v3.0 - OCP Tenets



Efficiency – The motherboard component and connector placements are fine-tuned for thermal efficiency, and layout is designed for optimized power efficiency. As seen on spec.org, has the lower power consumption at idle of all systems posted. At full configuration, system fan loading is at 50%, proving this system to be as efficient as possible, to help users save on operation expenditure.

Scalability – Flexible motherboard spec that allows for use in all types of HW building blocks.

Openness – Building upon previous contributions Decathlete v1 and v2, while optimizing and enhancing features. Compliant to DMTF Redfish API for an open source standard based management

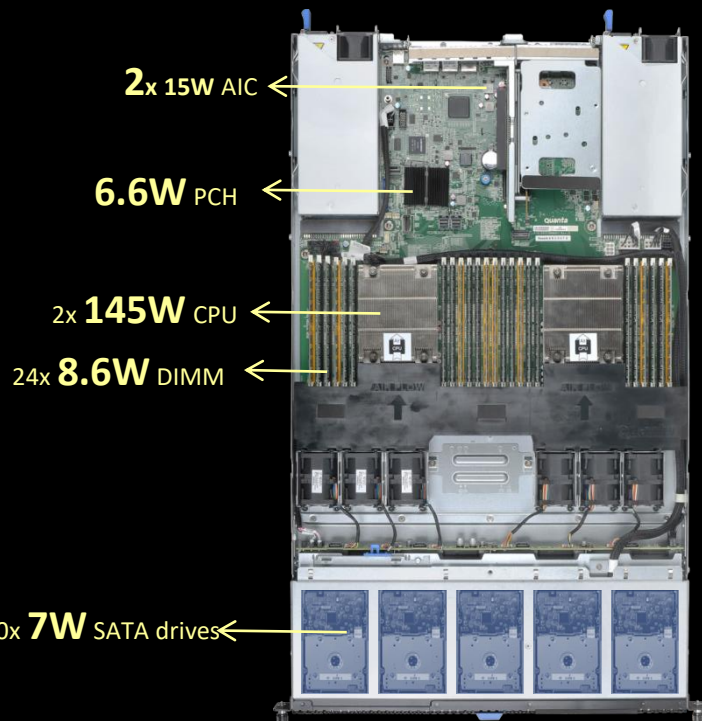
Impact – This contribution provides the community a current CPU platform version of previous gen Decathlete contributions. Enabling continuity for legacy rack users and colocation sites.



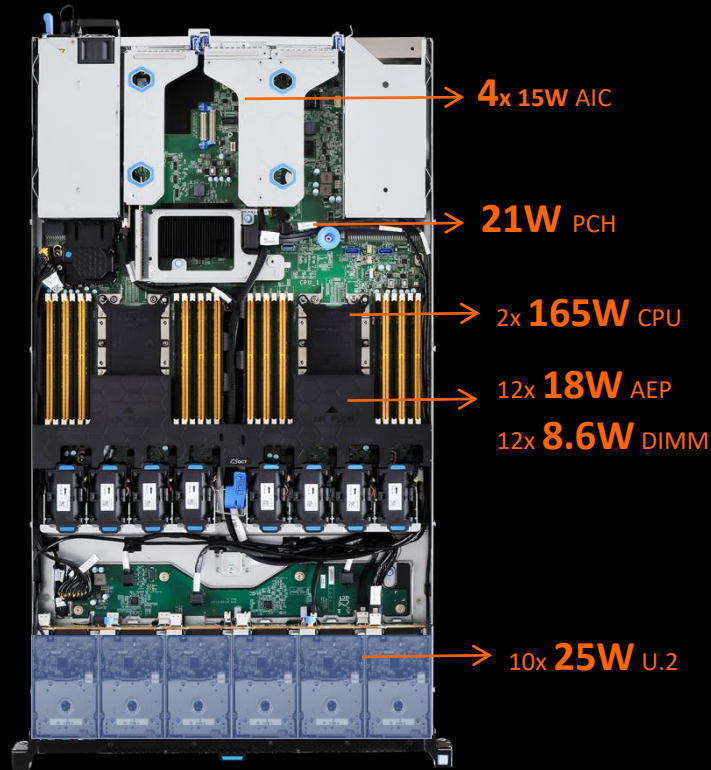


QuantaGrid D52B-1U

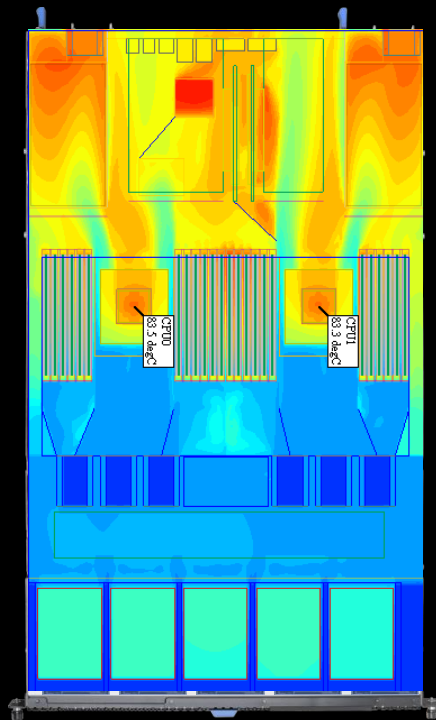
Previous Gen



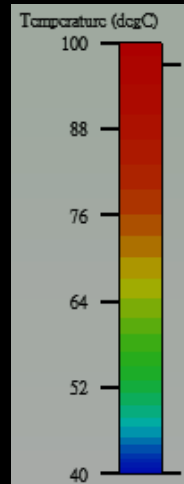
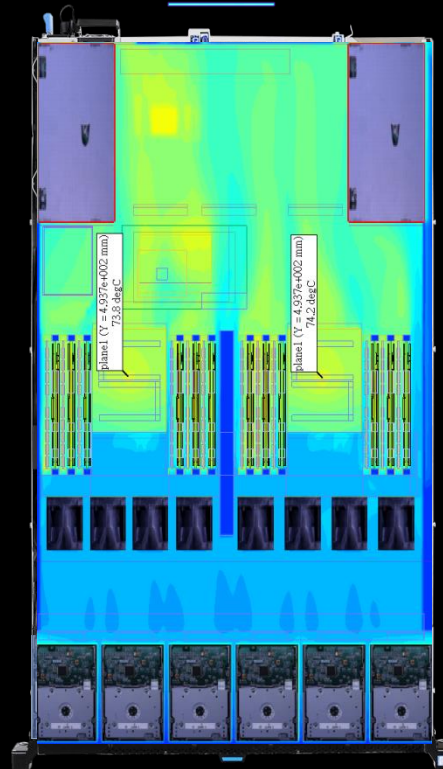
NOW



Previous Gen



NOW





Having full control of the system design & software fine tuning

Source: www.spec.org

Fine tuned for the lowest power draw during system idle

Vendor	System	Processor					Total Memory (GB)	Submeasurements		
		CPU Description	MHz	Chips	Cores	Total Threads		ssj_ops @ 100%	avg. watts @ 100%	avg. watts @ active idle
Vendor A		Intel Xeon Platinum 8180	2500	2	56	112	96	5,779,630	451	48.7
Vendor B		Intel Xeon Platinum 8180	2500	4	112	224	192	11,281,436	936	88.9
Vendor C		Intel Xeon Platinum 8176	2100	2	56	112	192	5,941,377	461	49.6
Vendor D		Intel Xeon Platinum 8180	2500	2	56	112	192	5,604,531	423	48.9
Vendor E		Intel Xeon Platinum 8176	2100	2	56	112	192	5,025,064	357	57.7
QCT	QuantaGrid D52B-2U	Intel Xeon Platinum 8180	2500	2	56	112	192	5,651,522	426	39.5



D52B-1U

Defying Physical Limitations



Top shelf Intel® Xeon® Purley processor*

Up to **5x** PCIe expansion slots

Up to **3TB** memory capacity**

Up to **5x** drive bay configurations

* With limited conditions

** With specific CPU

*** AEP with Cascade Lakes CPU



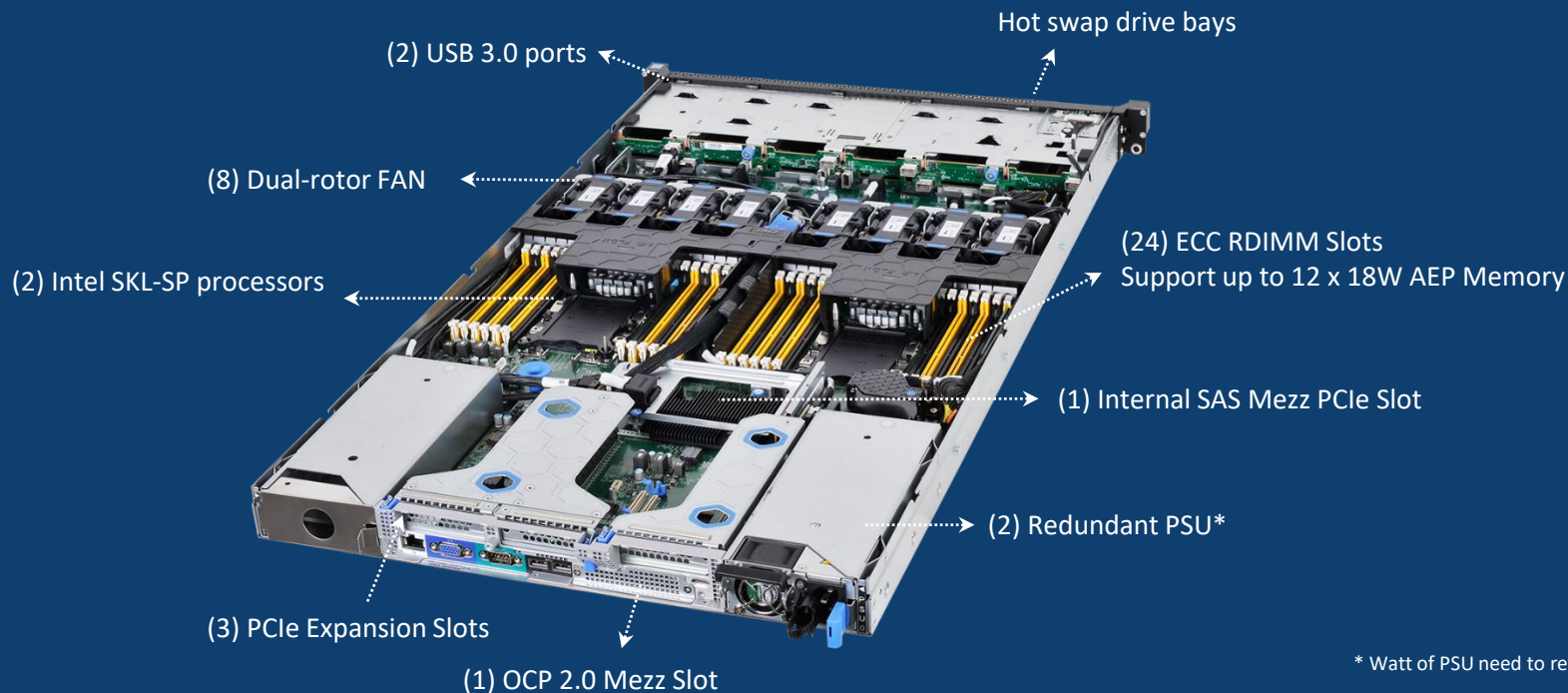
D52B-1U

Chassis Overview



D52B-1U

Chassis Overview



* Watt of PSU need to refer to SKU selection

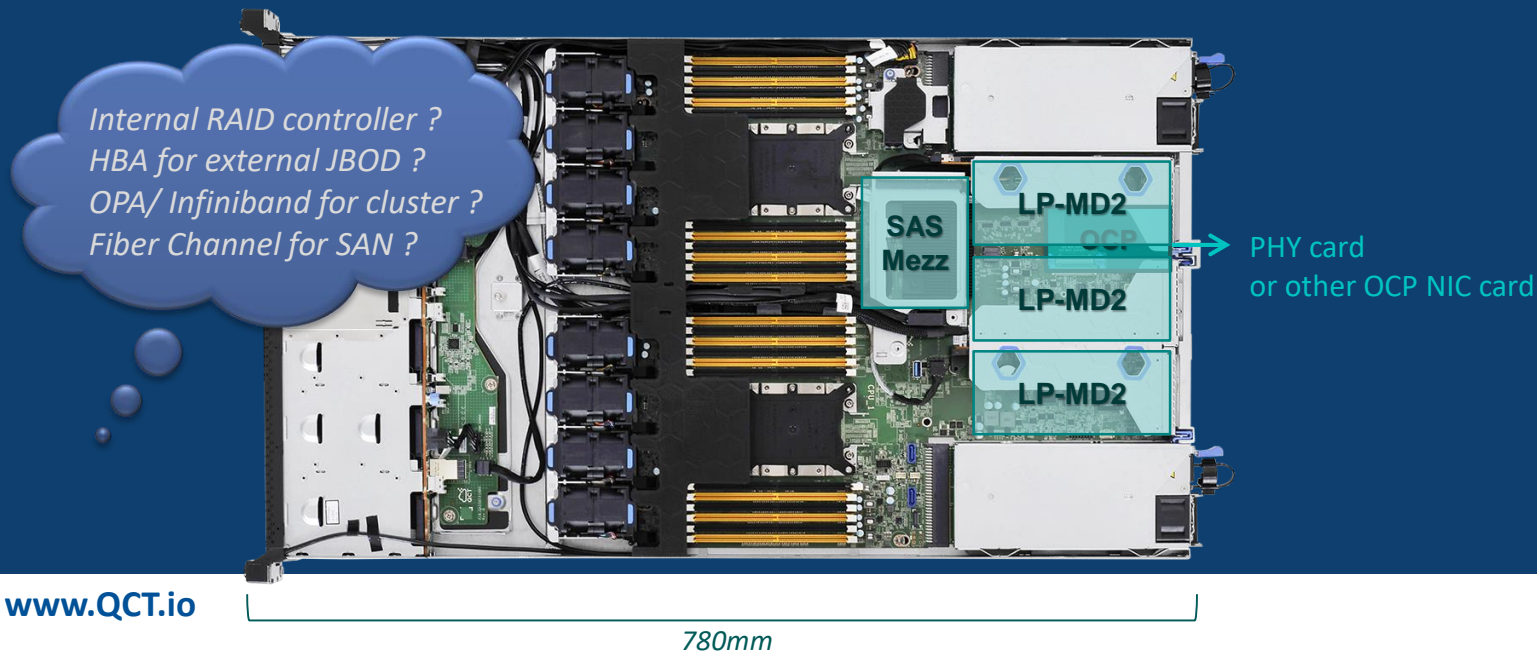


D52B-1U

Defying Physical Limitations



*As many as 5x PCIe expansion slots
making D52B configurable for a variety of applications*



D52B-1U

Flexible NIC Options



- Without Phy Card, PCIe lanes will auto-switch to support 3rd party OCP card
- OCP Mezz card and PHY card cannot use simultaneously.
- There's no additional on-board LAN.
Please must select either a Phy Card or 3rd party OCP card on AVL
- Default L6 SKU does not include OCP PHY card or OCP Mezz card
- OCP Mezz card please refer to CCL



OCP PHY Card Options

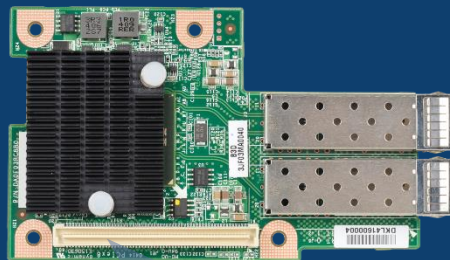
Port Count	Speed	Connector	Part Number
Dual port	1GbE	RJ45, Copper	ON 1G I357-T2
Quad port	1GbE	RJ45, Copper	ON 1G I357-T4
Dual port	1GbE/ 10GbE	RJ45, Copper	ON 10G X557-T2
Quad port	1GbE/ 10GbE	RJ45, Copper	ON 10G X557-T4
Dual port	1GbE/ 10GbE	SFP+, Copper DA or Fiber	ON 10G X527-DA2
Quad port	1GbE/ 10GbE	SFP+, Copper DA or Fiber	ON 10G X527-DA4

OCP Mezz Card Options

Port Count	Speed	Connector	Bus	Form Factor	Part Number
Single/ Dual port	25GbE	SFP 28	PCIe x8 G2	OCP 2.0 Type1 Mezz	ON 25G QL45204
Single/ Dual port	25GbE	SFP 28	PCIe x8 G3	OCP 2.0 Type1 Mezz	OON 25GbE CX4 LX EN
Single/ Dual port	25GbE	SFP 28	PCIe x8 G3	OCP 2.0 Type1 Mezz	BCM957302M3020C BCM957304M3040C
Dual port	40GbE	QSFP	PCIe x8 G3	OCP 2.0 Type1 Mezz	XL710-QDA2OCP
Single port	40GbE	QSFP	PCIe x8 G3	OCP 2.0 Type1 Mezz	ON 40GbE CX3PRO

What's the difference between OCP1.0 and OCP2.0?

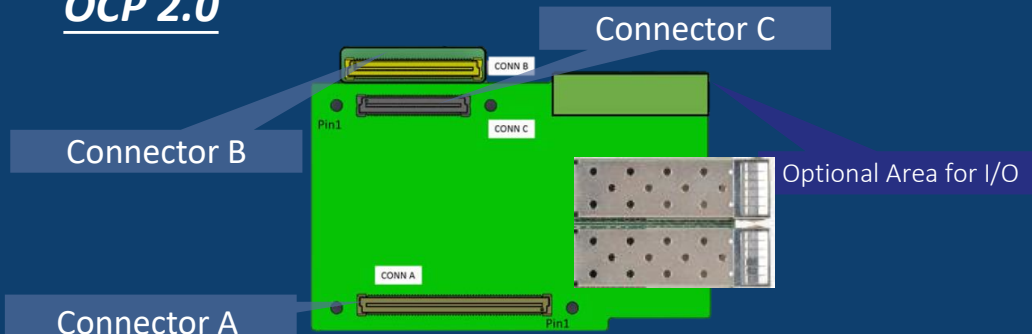
OCP 1.0



Connector A

Description	Connector	OCP Slot A
Single/Dual ports 1G	RJ45	V
Single/Dual ports 10G	SFP+/RJ45	V
Single port 40G	QSFP+	V

OCP 2.0

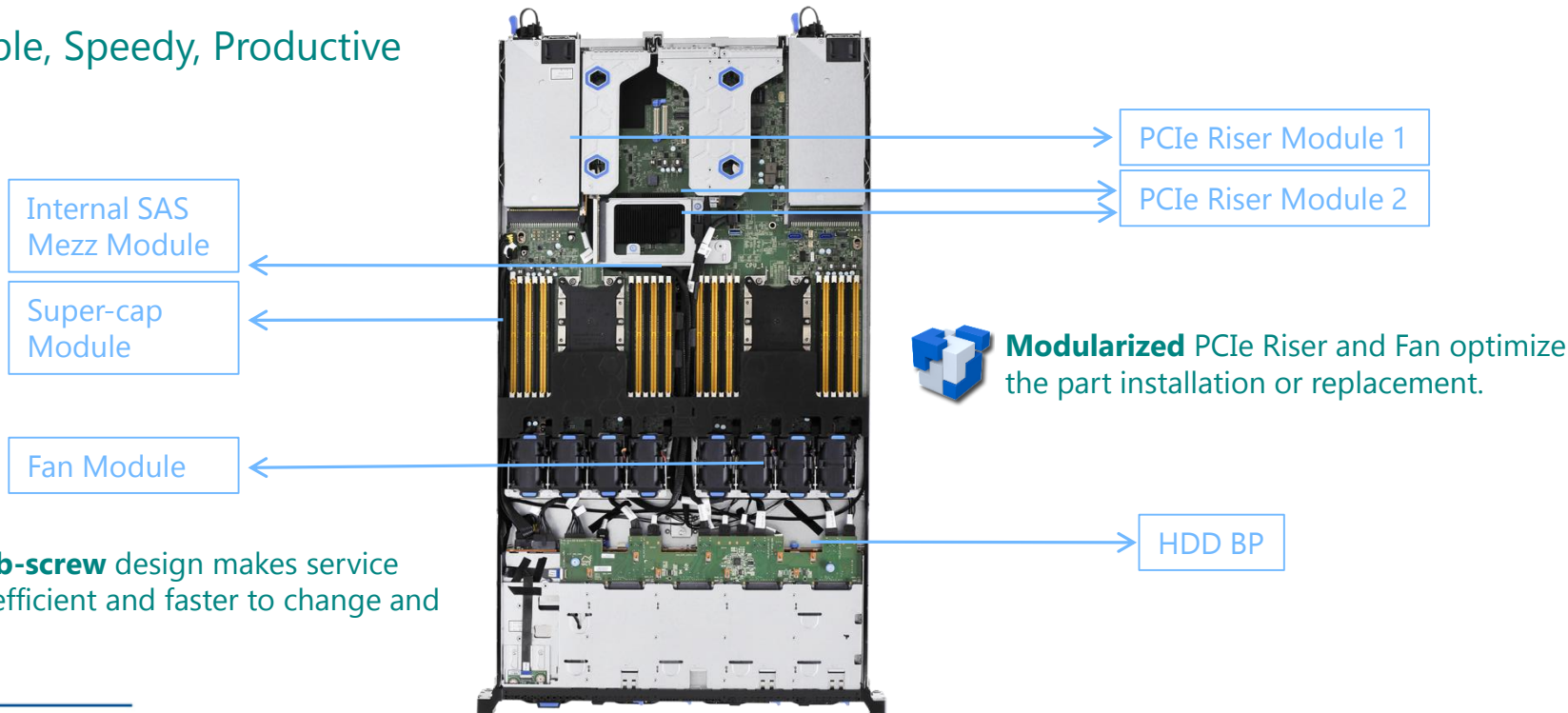


Description	Connector	OCP Slot A	OCP Slot B	OCP Slot C
Single/Dual ports 10G/25G	SFP+/SFP28	V	X	X
Single/Dual ports 40G	QSFP+	V	X	X
Single/Dual ports 50G/100G	QSFP28	V	V	X
Quad ports 25G	SFP+	V	V	X
PHY board	SFP+/RJ45	X	X	V

Enhanced Serviceability for D52B-1U

Blue Icon

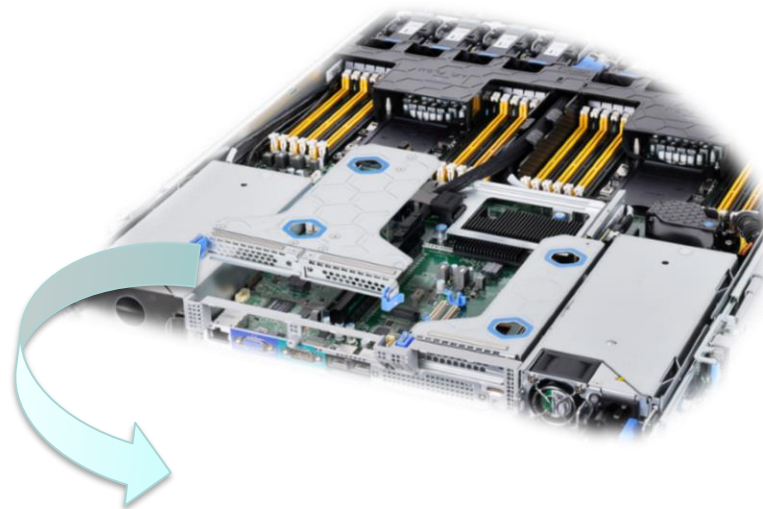
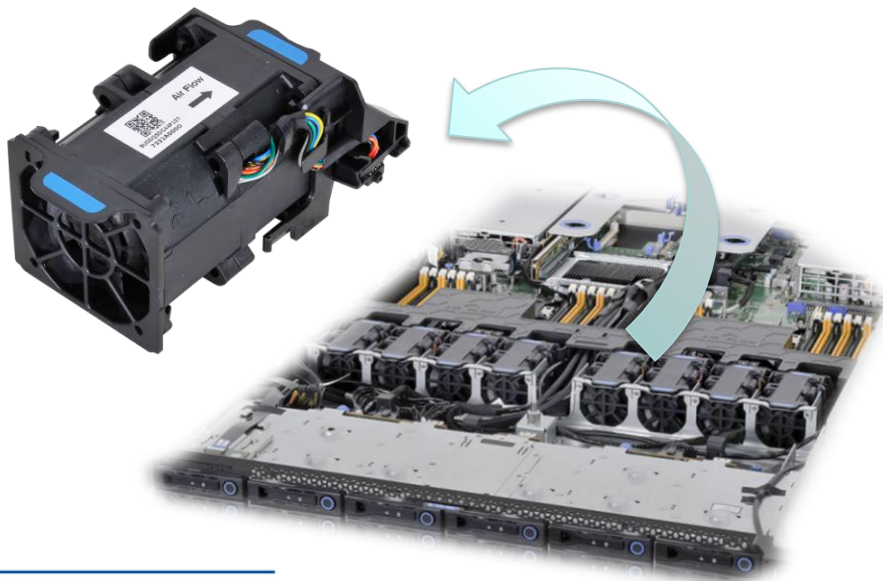
Simple, Speedy, Productive



Enhanced Serviceability for D52B-1U



Easy-Service Fan Modules



Easy-Service PCIe Riser Modules



Enhanced Serviceability for **D52B-1U**

Cable Arm

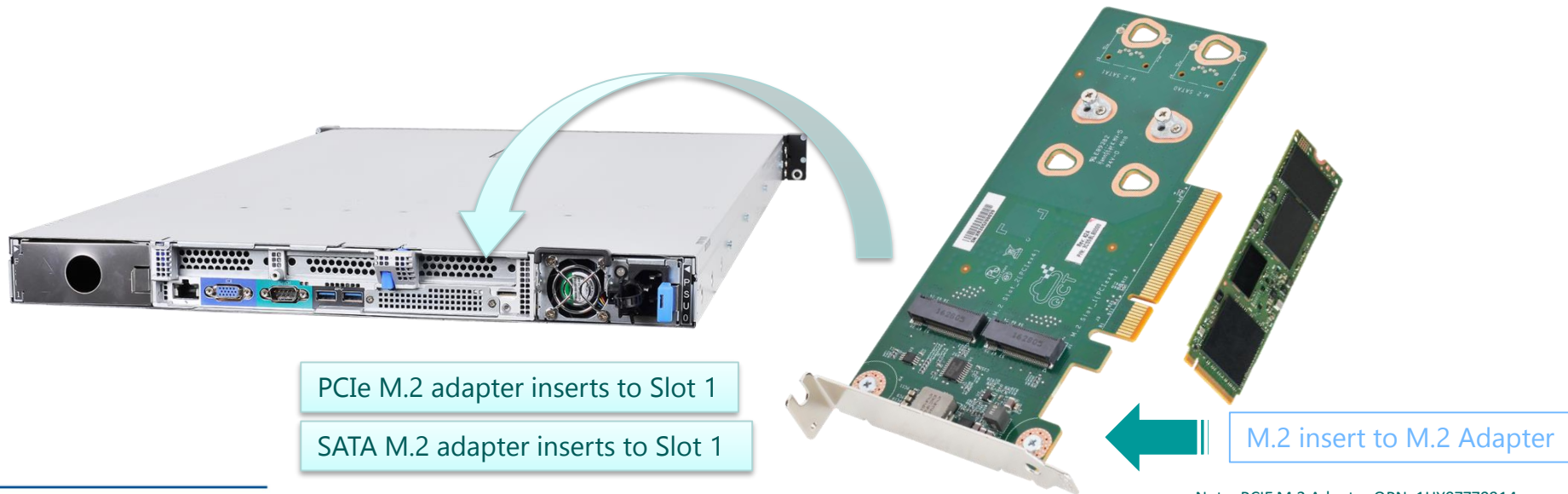
Screw-less for easy service and additional lock for security



Extra Storage – M.2 for **D52B-1U**

M.2

Leading edge PCIe M.2 enhance performance for OS



Note: PCIe M.2 Adapter QPN: 1HY9ZZZ0914



Thank You

www.QCT.io