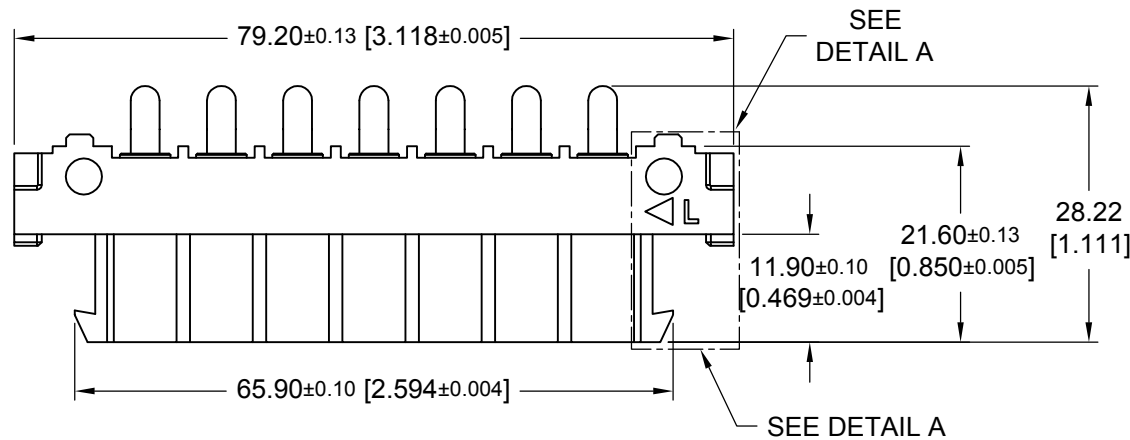
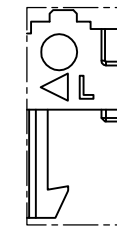


THIS DRAWING CONTAINS INFORMATION PROPRIETARY TO POSITRONIC AND ITS SUBSIDIARIES. POSITRONIC BELIEVES THE DATA ON THIS DRAWING TO BE RELIABLE, SINCE THE TECHNICAL INFORMATION IS GIVEN FREE OF CHARGE, THE USER EMPLOYS SUCH INFORMATION AT HIS OWN DISCRETION AND RISK. POSITRONIC ASSUMES NO RESPONSIBILITY FOR RESULTS OBTAINED OR DAMAGES INCURRED FROM USE OF SUCH INFORMATION IN WHOLE OR IN PART.

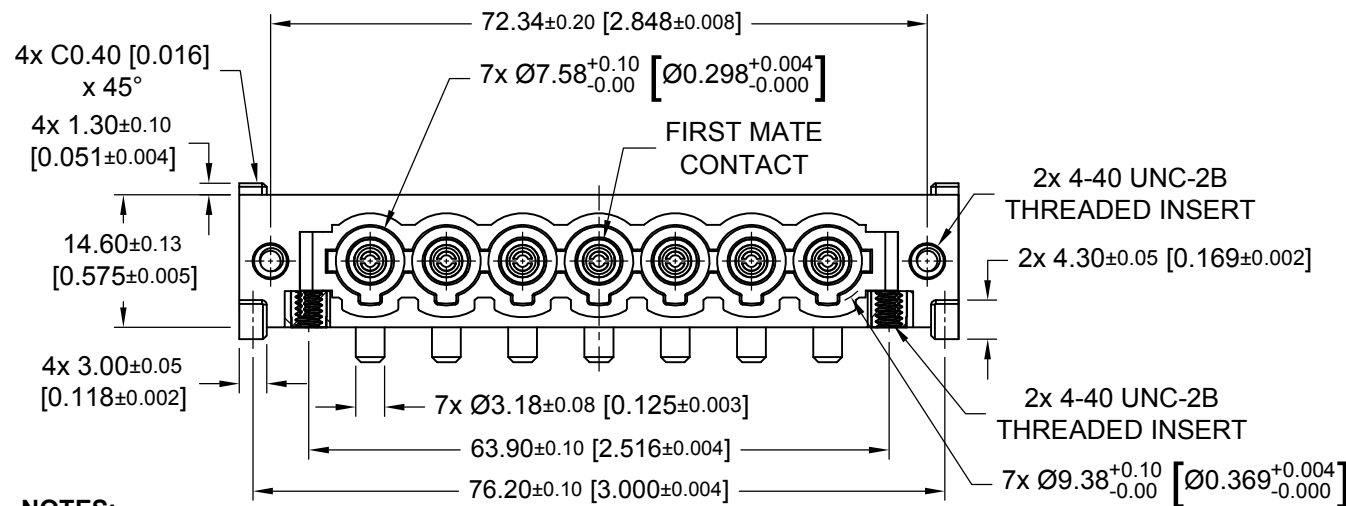
DATE	REV	REVISION RECORD	APP	DR	CK
07-21	E	ECO 75988	CM	EH	JH



DETAIL A

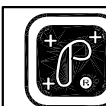
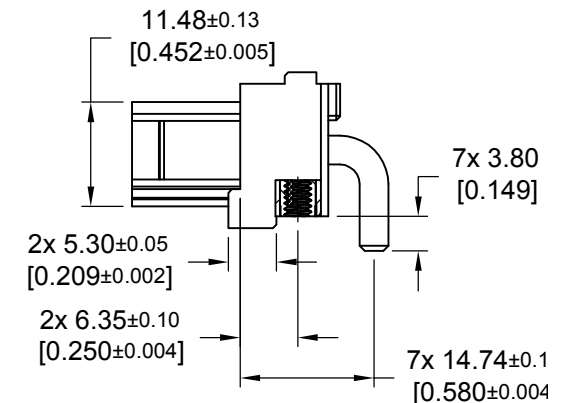


"L" INDICATE LEFT SIDE CONNECTOR.
 "◁" INDICATE STARTING POINT OF CONTACT POSITION 1.



NOTES:

- MATERIALS AND FINISHES:
 INSULATOR : GLASS-FILLED POLYESTER, UL 94V-0. COLOR: BLUE. (HALOGEN-FREE)
 POWER CONTACTS: HIGH CONDUCTIVITY COPPER ALLOY WITH GOLD FLASH OVER NICKEL PLATE.
 THREADED INSERT: COPPER ALLOY.
- COMPLIANT TO THE CURRENT ROHS DIRECTIVE.
- THIS MOS ALLOWS FOR THE CONNECTOR TO BE SUPPLIED WITH SPECIAL CONTACTS AND CONTACT MODULES WHICH ALLOWS FOR TOUCH SAFE FEATURE.
 THIS MOS ALSO ALLOWS FOR FIRST MATE CONTACT TO BE LOADED IN THE CENTRE CONTACT POSITION OF THE CONNECTOR.

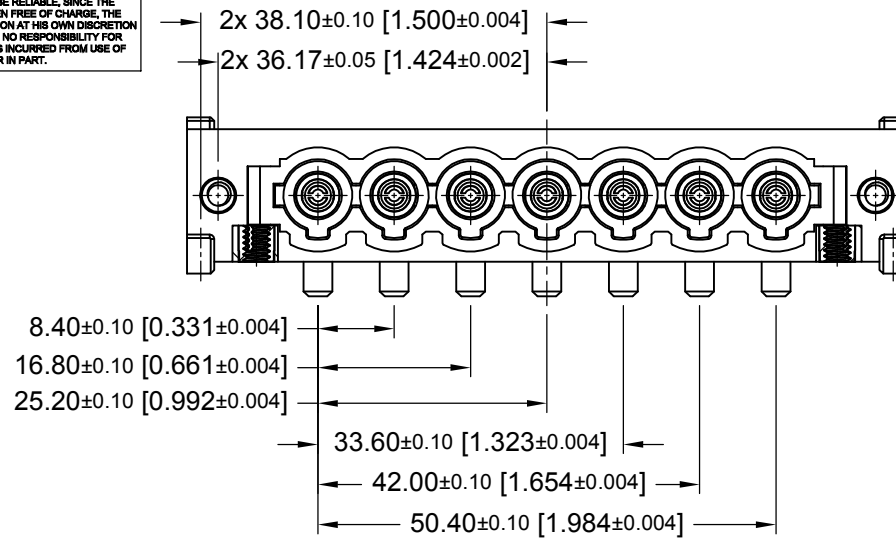


POSITRONIC INDUSTRIES INC.
 SPRINGFIELD, MISSOURI 65801

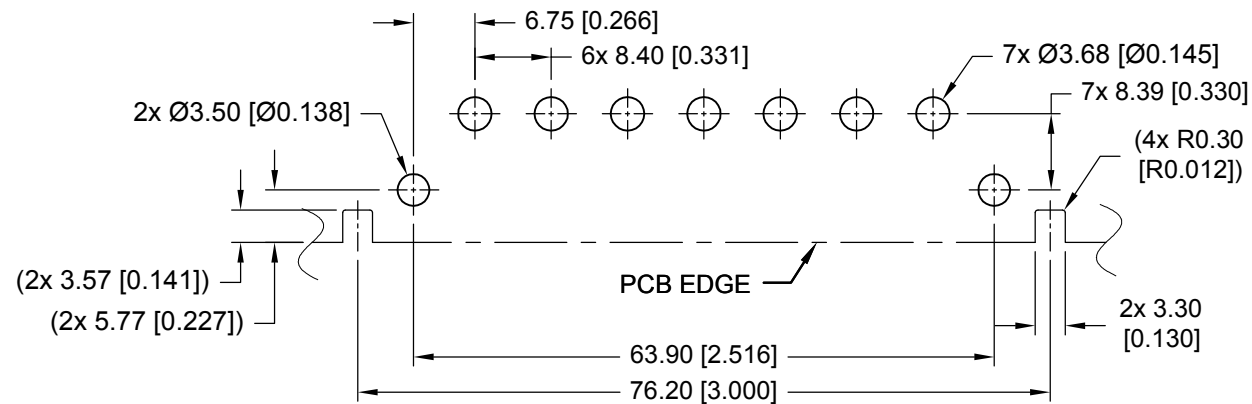
DECIMAL TOL. ± 0.38 [0.015]
ANGULAR TOL. $\pm 5^\circ$

SCALE N.T.S.	DRAWN BY EH
TITLE MALE CONNECTOR - LEFT	APPROVED BY SAMY
DATE 11-27-19	DRAWING NUMBER SP10RSSS48RM220A1/AA-2269 1 OF 2
REV. E	

THIS DRAWING CONTAINS INFORMATION PROPRIETARY TO POSITRONIC AND ITS SUBSIDIARIES. POSITRONIC BELIEVES THE DATA ON THIS DRAWING TO BE RELIABLE, SINCE THE TECHNICAL INFORMATION IS GIVEN FREE OF CHARGE, THE USER EMPLOYS SUCH INFORMATION AT HIS OWN DISCRETION AND RISK. POSITRONIC ASSUMES NO RESPONSIBILITY FOR RESULTS OBTAINED OR DAMAGES INCURRED FROM USE OF SUCH INFORMATION IN WHOLE OR IN PART.



PCB CONTACT HOLE PATTERN



PANEL CUTOUT (GENERAL TOLERANCE: ±0.13 [±0.005])

